



POMT2 rabbit pAb

Catalog No	BYab-11980
Isotype	IgG
Reactivity	Human; Mouse
Applications	WB;IHC
Gene Name	POMT2
Protein Name	POMT2
Immunogen	Synthesized peptide derived from human POMT2 AA range: 177-227
Specificity	This antibody detects endogenous levels of POMT2 at Human/Mouse
Formulation	Liquid in PBS containing 50% glycerol, 0.5% BSA and 0.02% sodium azide.
Source	Polyclonal, Rabbit,IgG
Purification	The antibody was affinity-purified from rabbit serum by affinity-chromatography using specific immunogen.
Dilution	WB 1:500-2000;IHC-p 1:50-300
Concentration	1 mg/ml
Purity	≥90%
Storage Stability	-20°C/1 year
Synonyms	
Observed Band	
Cell Pathway	Endoplasmic reticulum membrane ; Multi-pass membrane protein .
Tissue Specificity	Highly expressed in testis; detected at low levels in most tissues.
Function	catalytic activity:Dolichyl phosphate D-mannose + protein = dolichyl phosphate + O-D-mannosylprotein.,cofactor:Magnesium. Manganese and calcium ions suppress enzyme activity.,disease:Defects in POMT2 are a cause of Walker-Warburg syndrome (WWS) [MIM:236670]; also known as hydrocephalus-agyria-retinal dysplasia or HARD syndrome. WWS is an autosomal recessive disorder characterized by cobblestone lissencephaly, hydrocephalus, agyria, retinal dysplasia, with or without encephalocele. It is often associated with congenital muscular dystrophy and usually lethal within the first few months of life.,function:Transfers mannosyl residues to the hydroxyl group of serine or threonine residues. Coexpression of both POMT1 and POMT2 is necessary for enzyme activity, expression of either POMT1 or POMT2 alone is insufficient.,online information:GlycoGene database,pathway:Protein

Nanjing BYabscience technology Co.,Ltd



modification; protein gl

Background

The protein encoded by this gene is an O-mannosyltransferase that requires interaction with the product of the POMT1 gene for enzymatic function. The encoded protein is found in the membrane of the endoplasmic reticulum. Defects in this gene are a cause of Walker-Warburg syndrome (WWS).[provided by RefSeq, Oct 2008],

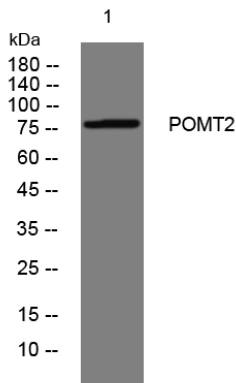
matters needing attention

Avoid repeated freezing and thawing!

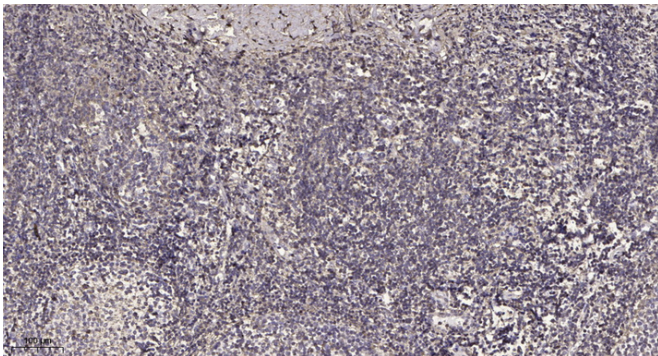
Usage suggestions

This product can be used in immunological reaction related experiments. For more information, please consult technical personnel.

Products Images



Western blot analysis of lysates from SH-SY5Y cells, primary antibody was diluted at 1:1000, 4° over night



Immunohistochemical analysis of paraffin-embedded human tonsil. 1, Antibody was diluted at 1:200(4° overnight). 2, Tris-EDTA,pH9.0 was used for antigen retrieval. 3,Secondary antibody was diluted at 1:200(room temperature, 45min).

Nanjing BYabscience technology Co.,Ltd