



CNPY2 rabbit pAb

Catalog No	BYab-11976
Isotype	IgG
Reactivity	Human; Mouse
Applications	WB
Gene Name	CNPY2 MSAP TMEM4 ZSIG9 UNQ1943/PRO4426
Protein Name	CNPY2
Immunogen	Synthesized peptide derived from human CNPY2 AA range: 26-76
Specificity	This antibody detects endogenous levels of CNPY2 at Human/Mouse
Formulation	Liquid in PBS containing 50% glycerol, 0.5% BSA and 0.02% sodium azide.
Source	Polyclonal, Rabbit,IgG
Purification	The antibody was affinity-purified from rabbit serum by affinity-chromatography using specific immunogen.
Dilution	WB 1: 500-2000
Concentration	1 mg/ml
Purity	≥90%
Storage Stability	-20°C/1 year
Synonyms	
Observed Band	
Cell Pathway	Endoplasmic reticulum .
Tissue Specificity	Expressed in different tissues. Highest levels are detected in adult placenta, liver and pancreas.
Function	function:Positive regulator of neurite outgrowth by stabilizing myosin regulatory light chain (MRLC). It prevents MIR-mediated MRLC ubiquitination and its subsequent proteasomal degradation.,similarity:Belongs to the canopy family.,similarity:Contains 1 saposin B-type domain.,subunit:Interacts with MYLIP/MIR.,tissue specificity:Expressed in different tissues. Highest levels are detected in adult placenta, liver and pancreas.,
Background	
matters needing attention	Avoid repeated freezing and thawing!

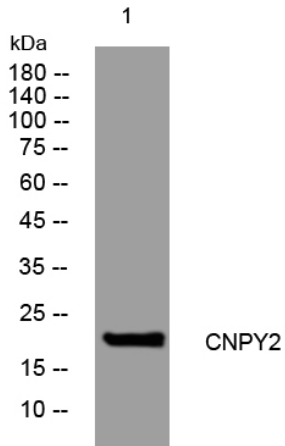
Nanjing BYabscience technology Co.,Ltd



Usage suggestions

This product can be used in immunological reaction related experiments. For more information, please consult technical personnel.

Products Images



Western blot analysis of lysates from HeLa cells, primary antibody was diluted at 1:1000, 4° over night