



PSDE rabbit pAb

Catalog No	BYab-11968
Isotype	IgG
Reactivity	Human; Mouse
Applications	WB;IHC
Gene Name	PSMD14 POH1
Protein Name	PSDE
Immunogen	Synthesized peptide derived from human PSDE AA range: 152-202
Specificity	This antibody detects endogenous levels of PSDE at Human/Mouse
Formulation	Liquid in PBS containing 50% glycerol, 0.5% BSA and 0.02% sodium azide.
Source	Polyclonal, Rabbit,IgG
Purification	The antibody was affinity-purified from rabbit serum by affinity-chromatography using specific immunogen.
Dilution	WB 1:500-2000;IHC-p 1:50-300
Concentration	1 mg/ml
Purity	≥90%
Storage Stability	-20°C/1 year
Synonyms	
Observed Band	
Cell Pathway	proteasome complex,nucleus,nucleoplasm,cytosol,proteasome regulatory particle, lid subcomplex,proteasome accessory complex,cytosolic proteasome complex,extracellular exosome,
Tissue Specificity	Widely expressed. Highest levels in heart and skeletal muscle.
Function	catalytic activity:Ubiquitin C-terminal thioester + H(2)O = ubiquitin + a thiol.,function:Metalloprotease component of the 26S proteasome that specifically cleaves 'Lys-63'-linked polyubiquitin chains. The 26S proteasome is involved in the ATP-dependent degradation of ubiquitinated proteins. The function of the 'Lys-63'-specific deubiquitination of the proteasome is unclear.,similarity:Belongs to the peptidase M67A family. PSMD14 subfamily.,similarity:Contains 1 MPN (JAB/Mov34) domain.,subunit:Component of the 19S regulatory cap of the 26S proteasome.,tissue specificity:Widely expressed. Highest levels in heart and skeletal muscle.,

Nanjing BYabscience technology Co.,Ltd



Background

This gene encodes a component of the 26S proteasome. The 26S proteasome is a large multiprotein complex that catalyzes the degradation of ubiquitinated intracellular proteins. The encoded protein is a component of the 19S regulatory cap complex of the 26S proteasome and mediates substrate deubiquitination. A pseudogene of this gene is also located on the long arm of chromosome 2. [provided by RefSeq, Feb 2012],

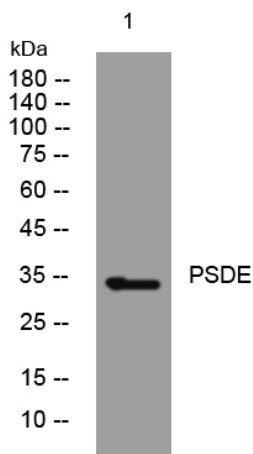
matters needing attention

Avoid repeated freezing and thawing!

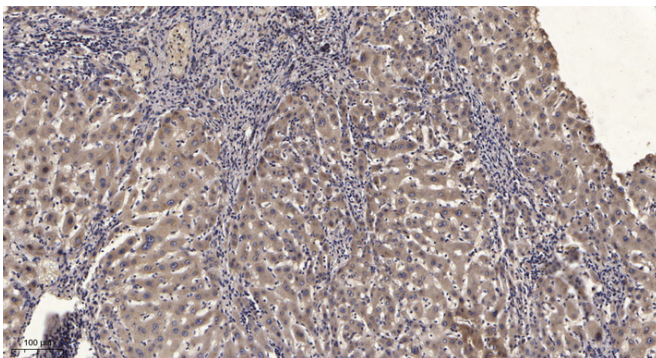
Usage suggestions

This product can be used in immunological reaction related experiments. For more information, please consult technical personnel.

Products Images



Western blot analysis of lysates from HeLa cells, primary antibody was diluted at 1:1000, 4° over night



Immunohistochemical analysis of paraffin-embedded human liver cancer. 1, Antibody was diluted at 1:200(4° overnight). 2, Tris-EDTA, pH9.0 was used for antigen retrieval. 3, Secondary antibody was diluted at 1:200(room temperature, 45min).