



# TYW2 rabbit pAb

<b>Catalog No</b>	BYab-11966
<b>Isotype</b>	IgG
<b>Reactivity</b>	Human; Mouse;Rat
<b>Applications</b>	WB
<b>Gene Name</b>	TRMT12 TRM12 TYW2
<b>Protein Name</b>	TYW2
<b>Immunogen</b>	Synthesized peptide derived from human TYW2 AA range: 11-61
<b>Specificity</b>	This antibody detects endogenous levels of TYW2 at Human/Mouse/Rat
<b>Formulation</b>	Liquid in PBS containing 50% glycerol, 0.5% BSA and 0.02% sodium azide.
<b>Source</b>	Polyclonal, Rabbit,IgG
<b>Purification</b>	The antibody was affinity-purified from rabbit serum by affinity-chromatography using specific immunogen.
<b>Dilution</b>	WB 1: 500-2000
<b>Concentration</b>	1 mg/ml
<b>Purity</b>	≥90%
<b>Storage Stability</b>	-20°C/1 year
<b>Synonyms</b>	
<b>Observed Band</b>	
<b>Cell Pathway</b>	
<b>Tissue Specificity</b>	
<b>Function</b>	function:Probable S-adenosyl-L-methionine-dependent methyltransferase that acts as a component of the wybutosine biosynthesis pathway. Wybutosine is a hyper modified guanosine with a tricyclic base found at the 3'-position adjacent to the anticodon of eukaryotic phenylalanine tRNA.,pathway:tRNA modification; wybutosine-tRNA(Phe) biosynthesis.,sequence caution:Contaminating sequence. Potential poly-A sequence starting in position 371.,sequence caution:Translation N-terminally shortened.,similarity:Belongs to the RNA methyltransferase trmD family. TYW2 subfamily.,
<b>Background</b>	Wybutosine (yW) is a hypermodified guanosine at the 3-prime position adjacent to the anticodon of phenylalanine tRNA that stabilizes codon-anticodon interactions during decoding on the ribosome. TRMT12 is the human homolog of a yeast gene

Nanjing BYabscience technology Co.,Ltd



essential for yW synthesis (Noma and Suzuki, 2006).[supplied by OMIM, Mar 2008],

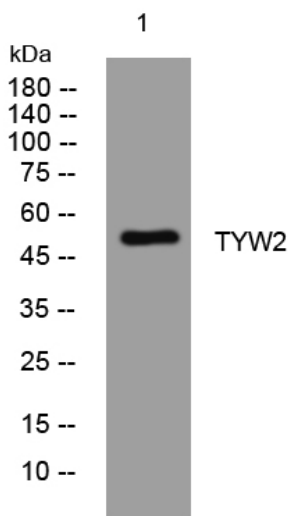
**matters needing attention**

Avoid repeated freezing and thawing!

**Usage suggestions**

This product can be used in immunological reaction related experiments. For more information, please consult technical personnel.

## Products Images



Western blot analysis of lysates from HeLa cells, primary antibody was diluted at 1:1000, 4°over night