



# RUVB1 rabbit pAb

<b>Catalog No</b>	BYab-11964
<b>Isotype</b>	IgG
<b>Reactivity</b>	Human; Mouse;Rat
<b>Applications</b>	WB
<b>Gene Name</b>	RUVBL1 INO80H NMP238 TIP49 TIP49A
<b>Protein Name</b>	RUVB1
<b>Immunogen</b>	Synthesized peptide derived from human RUVB1 AA range: 195-245
<b>Specificity</b>	This antibody detects endogenous levels of RUVB1 at Human/Mouse/Rat
<b>Formulation</b>	Liquid in PBS containing 50% glycerol, 0.5% BSA and 0.02% sodium azide.
<b>Source</b>	Polyclonal, Rabbit,IgG
<b>Purification</b>	The antibody was affinity-purified from rabbit serum by affinity-chromatography using specific immunogen.
<b>Dilution</b>	WB 1: 500-2000
<b>Concentration</b>	1 mg/ml
<b>Purity</b>	≥90%
<b>Storage Stability</b>	-20°C/1 year
<b>Synonyms</b>	
<b>Observed Band</b>	
<b>Cell Pathway</b>	Nucleus matrix. Nucleus, nucleoplasm. Cytoplasm . Membrane . Cytoplasm, cytoskeleton, microtubule organizing center, centrosome. Dynein axonemal particle . Mainly localized in the nucleus, associated with nuclear matrix or in the nuclear cytosol, although it is also present in the cytoplasm and associated with the cell membranes. In prophase and prometaphase it is located at the centrosome and the branching microtubule spindles. After mitotic nuclear membrane disintegration it accumulates at the centrosome and sites of tubulin polymerization. As cells pass through metaphase and into telophase it is located close to the centrosome at the early phase of tubulin polymerization. In anaphase it accumulates at the zone of tubule interdigitation. In telophase it is found at polar tubule overlap,
<b>Tissue Specificity</b>	Ubiquitously expressed with high expression in heart, skeletal muscle and testis.
<b>Function</b>	domain:Binding to MYC is dependent on a Myc domain essential for oncogenic activity.,function:Essential for cell proliferation.,function:May be able to bind plasminogen at cell surface and enhance plasminogen

**Nanjing BYabscience technology Co.,Ltd**



activation.,function:Possesses single-stranded DNA-stimulated ATPase and ATP-dependent DNA helicase (3' to 5') activity. Component of the NuA4 histone acetyltransferase complex which is involved in transcriptional activation of select genes principally by acetylation of nucleosomal histones H4 and H2A. This modification may both alter nucleosome - DNA interactions and promote interaction of the modified histones with other proteins which positively regulate transcription. This complex may be required for the activation of transcriptional programs associated with oncogene and proto-oncogene mediated growth induction, tumor suppressor mediated growth arrest and replicative senescence,

**Background**

This gene encodes a protein that has both DNA-dependent ATPase and DNA helicase activities and belongs to the ATPases associated with diverse cellular activities (AAA+) protein family. The encoded protein associates with several multisubunit transcriptional complexes and with protein complexes involved in both ATP-dependent transcriptional remodeling and histone modification. Alternate splicing results in multiple transcript variants. [provided by RefSeq, Jan 2016],

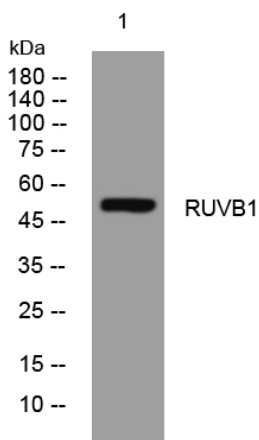
**matters needing attention**

Avoid repeated freezing and thawing!

**Usage suggestions**

This product can be used in immunological reaction related experiments. For more information, please consult technical personnel.

**Products Images**



Western blot analysis of lysates from MCF-7 cells, primary antibody was diluted at 1:1000, 4°over night