



# BEND2 rabbit pAb

<b>Catalog No</b>	BYab-11962
<b>Isotype</b>	IgG
<b>Reactivity</b>	Human;Rat;Mouse;
<b>Applications</b>	WB
<b>Gene Name</b>	BEND2 CXorf20
<b>Protein Name</b>	BEND2
<b>Immunogen</b>	Synthesized peptide derived from human BEND2 AA range: 48-98
<b>Specificity</b>	This antibody detects endogenous levels of BEND2 at Human
<b>Formulation</b>	Liquid in PBS containing 50% glycerol, 0.5% BSA and 0.02% sodium azide.
<b>Source</b>	Polyclonal, Rabbit,IgG
<b>Purification</b>	The antibody was affinity-purified from rabbit serum by affinity-chromatography using specific immunogen.
<b>Dilution</b>	WB 1: 500-2000
<b>Concentration</b>	1 mg/ml
<b>Purity</b>	≥90%
<b>Storage Stability</b>	-20°C/1 year
<b>Synonyms</b>	
<b>Observed Band</b>	
<b>Cell Pathway</b>	
<b>Tissue Specificity</b>	
<b>Function</b>	
<b>Background</b>	This gene encodes a protein which has two BEN domains in the C-terminus. These domains are found in proteins which participate in protein and DNA interactions which occur during chromatin restructuring or transcription. Alternative splicing results in multiple transcript variants. [provided by RefSeq, Aug 2011],
<b>matters needing attention</b>	Avoid repeated freezing and thawing!

Nanjing BYabscience technology Co.,Ltd

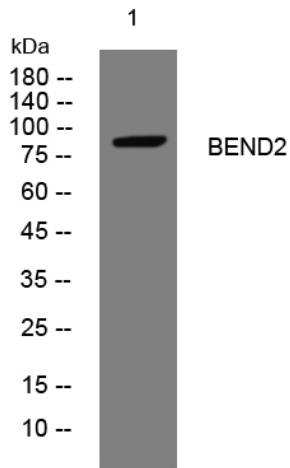


### Usage suggestions

This product can be used in immunological reaction related experiments. For more information, please consult technical personnel.

## Products Images

Western blot analysis of lysates from KB cells, primary antibody was diluted at 1:1000, 4° over night



Nanjing BYabscience technology Co.,Ltd

网址: [www.njbybio.com](http://www.njbybio.com)

官方热线: 025-5229-8998

监督电话: 15950492658