



# RBM25 rabbit pAb

<b>Catalog No</b>	BYab-11959
<b>Isotype</b>	IgG
<b>Reactivity</b>	Human; Mouse
<b>Applications</b>	WB;IHC
<b>Gene Name</b>	RBM25 RNPC7
<b>Protein Name</b>	RBM25
<b>Immunogen</b>	Synthesized peptide derived from human RBM25 AA range: 763-813
<b>Specificity</b>	This antibody detects endogenous levels of RBM25 at Human/Mouse
<b>Formulation</b>	Liquid in PBS containing 50% glycerol, 0.5% BSA and 0.02% sodium azide.
<b>Source</b>	Polyclonal, Rabbit,IgG
<b>Purification</b>	The antibody was affinity-purified from rabbit serum by affinity-chromatography using specific immunogen.
<b>Dilution</b>	WB 1:500-2000;IHC-p 1:50-300
<b>Concentration</b>	1 mg/ml
<b>Purity</b>	≥90%
<b>Storage Stability</b>	-20°C/1 year
<b>Synonyms</b>	
<b>Observed Band</b>	
<b>Cell Pathway</b>	Nucleus speckle. Cytoplasm. Colocalizes predominantly, with SFRS2 and LUC7L3 splicing factors, in nuclear speckles. Cytoplasmic localization is faint.
<b>Tissue Specificity</b>	
<b>Function</b>	PTM:Sumoylated.,sequence caution:Contaminating sequence. Potential poly-A sequence.,sequence caution:Translation N-terminally extended.,similarity:Contains 1 PWI domain.,similarity:Contains 1 RRM (RNA recognition motif) domain.,subcellular location:Detected predominantly in nuclear speckles. Cytoplasmic localization is faint.,subunit:Interacts with SRRM1. Specifically associates with functional splicing complexes, including Sm proteins and U1, U2, U4, U5 and U6 snRNAs. Associates with exon junction complex (EJC) proteins, including APEX1, BAT1, NCBP1, RBM8A and RNPS1. Interaction with NCBP1 is RNA-dependent.,
<b>Background</b>	

Nanjing BYabscience technology Co.,Ltd



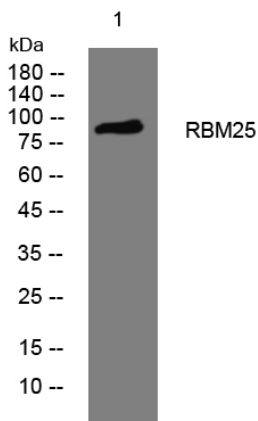
**matters needing attention**

Avoid repeated freezing and thawing!

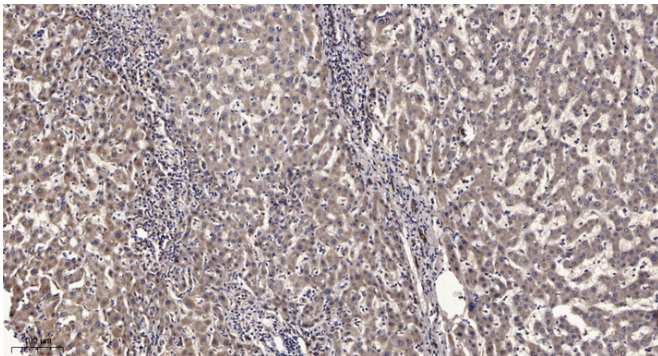
**Usage suggestions**

This product can be used in immunological reaction related experiments. For more information, please consult technical personnel.

**Products Images**



Western blot analysis of lysates from VEC cells, primary antibody was diluted at 1:1000, 4° over night



Immunohistochemical analysis of paraffin-embedded human liver cancer. 1, Antibody was diluted at 1:200(4° overnight). 2, Tris-EDTA,pH9.0 was used for antigen retrieval. 3,Secondary antibody was diluted at 1:200(room temperature, 45min).