



PPR17 rabbit pAb

Catalog No	BYab-11958
Isotype	IgG
Reactivity	Human; Mouse
Applications	WB;IHC
Gene Name	PPP1R17 C7orf16 GSBS
Protein Name	PPR17
Immunogen	Synthesized peptide derived from human PPR17 AA range: 75-125
Specificity	This antibody detects endogenous levels of PPR17 at Human/Mouse
Formulation	Liquid in PBS containing 50% glycerol, 0.5% BSA and 0.02% sodium azide.
Source	Polyclonal, Rabbit,IgG
Purification	The antibody was affinity-purified from rabbit serum by affinity-chromatography using specific immunogen.
Dilution	WB 1:500-2000;IHC-p 1:50-300
Concentration	1 mg/ml
Purity	≥90%
Storage Stability	-20°C/1 year
Synonyms	
Observed Band	
Cell Pathway	intracellular,
Tissue Specificity	Highly expressed in cerebellum.
Function	function:Inhibits protein phosphatase-2A and protein phosphatase-1.,PTM:Substrate for cGMP-dependent protein kinase.,tissue specificity:Highly expressed in cerebellum.,
Background	The protein encoded by this gene is found primarily in cerebellar Purkinje cells, where it functions as a protein phosphatase inhibitor. The encoded protein is a substrate for cGMP-dependent protein kinase. An allele of this gene was discovered that increases susceptibility to hypercholesterolemia. Two transcript variants encoding different isoforms have been found for this gene. [provided by RefSeq, Jul 2010],

Nanjing BYabscience technology Co.,Ltd



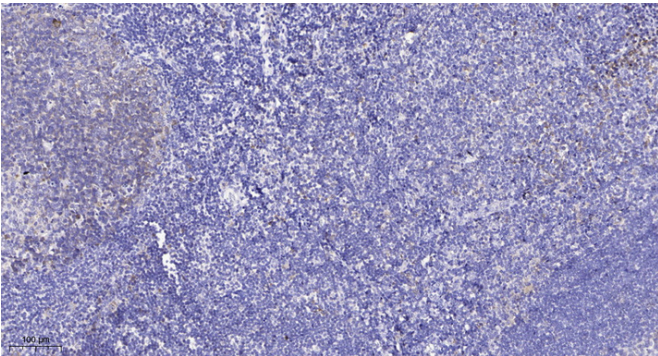
matters needing attention

Avoid repeated freezing and thawing!

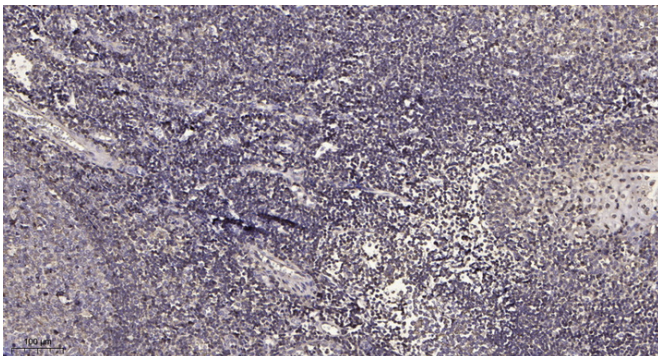
Usage suggestions

This product can be used in immunological reaction related experiments. For more information, please consult technical personnel.

Products Images



Western blot analysis of lysates from U2OS cells, primary antibody was diluted at 1:1000, 4° over night



Immunohistochemical analysis of paraffin-embedded human tonsil. 1, Antibody was diluted at 1:200(4° overnight). 2, Tris-EDTA, pH9.0 was used for antigen retrieval. 3, Secondary antibody was diluted at 1:200(room temperature, 45min).