



CPSF5 rabbit pAb

Catalog No	BYab-11953
Isotype	IgG
Reactivity	Human; Mouse;Rat
Applications	WB
Gene Name	NUDT21 CFIM25 CPSF25 CPSF5
Protein Name	CPSF5
Immunogen	Synthesized peptide derived from human CPSF5 AA range: 25-75
Specificity	This antibody detects endogenous levels of CPSF5 at Human/Mouse/Rat
Formulation	Liquid in PBS containing 50% glycerol, 0.5% BSA and 0.02% sodium azide.
Source	Polyclonal, Rabbit,IgG
Purification	The antibody was affinity-purified from rabbit serum by affinity-chromatography using specific immunogen.
Dilution	WB 1: 500-2000
Concentration	1 mg/ml
Purity	≥90%
Storage Stability	-20°C/1 year
Synonyms	
Observed Band	
Cell Pathway	Nucleus . Cytoplasm . Shuttles between the nucleus and the cytoplasm in a transcription- and XPO1/CRM1-independent manner, most probably in complex with the cleavage factor Im complex (CFIm) (PubMed:19864460). In punctate subnuclear structures localized adjacent to nuclear speckles, called paraspeckles (PubMed:15169763). .
Tissue Specificity	Expressed in the heart, brain, placenta, lung, liver, skeletal muscle, kidney and pancreas.
Function	function:Component of the cleavage factor Im (CFIm) complex that plays a key role in pre-mRNA 3'-processing. Involved in association with CPSF6 in pre-MRNA 3'-end poly(A) site cleavage and poly(A) addition. NUDT21/CPSF5 binds to cleavage and polyadenylation RNA substrates. Binds to, but does not hydrolyze mono- and di-adenosine nucleotides. May have a role in mRNA export.,miscellaneous:Has no hydrolase activity as missing metal-binding sites in NUDIX motif.,PTM:Acetylated mainly by p300/CBP, recruited to the complex by CPSF6. Acetylation decreases interaction with PAPA0. Deacetylated by the class

Nanjing BYabscience technology Co.,Ltd



I/II HDACs, HDAC1, HDAC3 and HDAC10, and by the class III HDACs, SIRT1 AND SIRT2.,similarity:Belongs to the Nudix hydrolase family. CPSF5 subfamily.,similarity:Contains 1 nudix hydrolase domain.,subcellular location:In punctate subnuclear structures localized adjacent to nuclear speckles, called

Background

The protein encoded by this gene is one subunit of a cleavage factor required for 3' RNA cleavage and polyadenylation processing. The interaction of the protein with the RNA is one of the earliest steps in the assembly of the 3' end processing complex and facilitates the recruitment of other processing factors. This gene encodes the 25kD subunit of the protein complex, which is composed of four polypeptides. [provided by RefSeq, Jul 2008],

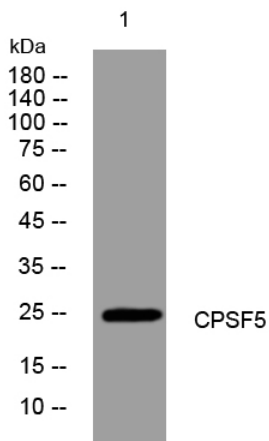
matters needing attention

Avoid repeated freezing and thawing!

Usage suggestions

This product can be used in immunological reaction related experiments. For more information, please consult technical personnel.

Products Images



Western blot analysis of lysates from HpeG2 cells, primary antibody was diluted at 1:1000, 4° over night