



SIDT2 rabbit pAb

Catalog No	BYab-11937
Isotype	IgG
Reactivity	Human; Mouse;Rat
Applications	WB;ELISA;IHC
Gene Name	SIDT2 CGI-40 PSEC0072 UNQ685/PRO1325
Protein Name	SIDT2
Immunogen	Synthesized peptide derived from human SIDT2 AA range: 393-443
Specificity	This antibody detects endogenous levels of SIDT2 at Human/Mouse/Rat
Formulation	Liquid in PBS containing 50% glycerol, 0.5% BSA and 0.02% sodium azide.
Source	Polyclonal, Rabbit,IgG
Purification	The antibody was affinity-purified from rabbit serum by affinity-chromatography using specific immunogen.
Dilution	WB 1:500-2000;IHC-p 1:50-300; ELISA 2000-20000
Concentration	1 mg/ml
Purity	≥90%
Storage Stability	-20°C/1 year
Synonyms	
Observed Band	
Cell Pathway	Lysosome membrane ; Multi-pass membrane protein . Cell membrane . Mainly localizes to lysosomes and only partly to the plasma membrane (PubMed:28277980). Lysosomal localization is required for SIDT2-mediated intracellular degradation of endogenous RNA (By similarity). .
Tissue Specificity	
Function	similarity:Belongs to the SID1 family.,
Background	
matters needing attention	Avoid repeated freezing and thawing!

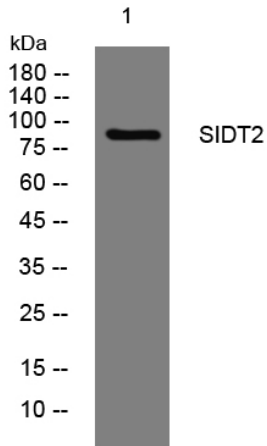
Nanjing BYabscience technology Co.,Ltd



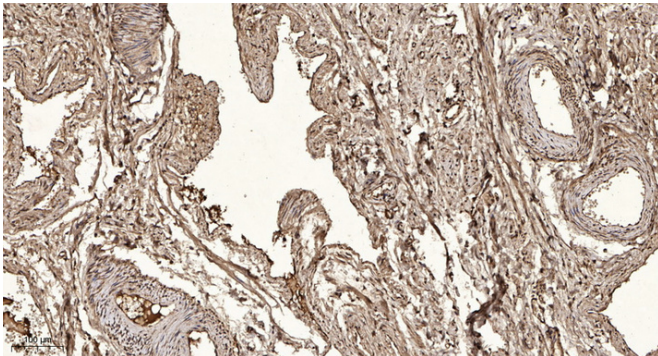
Usage suggestions

This product can be used in immunological reaction related experiments. For more information, please consult technical personnel.

Products Images



Western blot analysis of lysates from MCF-7 cells, primary antibody was diluted at 1:1000, 4° over night



Immunohistochemical analysis of paraffin-embedded human oophoroma. 1, Antibody was diluted at 1:200(4° overnight). 2, Tris-EDTA, pH9.0 was used for antigen retrieval. 3, Secondary antibody was diluted at 1:200(room temperature, 45min).