



SYPL2 rabbit pAb

Catalog No	BYab-11935
Isotype	IgG
Reactivity	Human; Mouse
Applications	WB
Gene Name	SYPL2
Protein Name	SYPL2
Immunogen	Synthesized peptide derived from human SYPL2 AA range: 160-210
Specificity	This antibody detects endogenous levels of SYPL2 at Human/Mouse
Formulation	Liquid in PBS containing 50% glycerol, 0.5% BSA and 0.02% sodium azide.
Source	Polyclonal, Rabbit,IgG
Purification	The antibody was affinity-purified from rabbit serum by affinity-chromatography using specific immunogen.
Dilution	WB 1: 500-2000
Concentration	1 mg/ml
Purity	≥90%
Storage Stability	-20°C/1 year
Synonyms	
Observed Band	
Cell Pathway	Membrane ; Multi-pass membrane protein . Triad junction, the junctional complex between the transverse tubule and the sarcoplasmic reticulum. .
Tissue Specificity	
Function	function:Involved in communication between the T-tubular and junctional sarcoplasmic reticulum (SR) membranes.,similarity:Belongs to the synaptophysin/synaptobrevin family.,similarity:Contains 1 MARVEL domain.,subcellular location:Triad junction, the junctional complex between the transverse tubule and the sarcoplasmic reticulum.,
Background	
matters needing attention	Avoid repeated freezing and thawing!

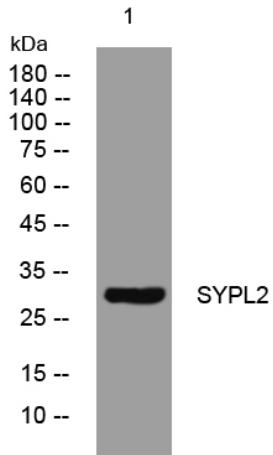
Nanjing BYabscience technology Co.,Ltd



Usage suggestions

This product can be used in immunological reaction related experiments. For more information, please consult technical personnel.

Products Images



Western blot analysis of lysates from HpeG2 cells, primary antibody was diluted at 1:1000, 4° over night