



ZMIZ2 rabbit pAb

Catalog No	BYab-11927
Isotype	IgG
Reactivity	Human; Mouse
Applications	WB
Gene Name	ZMIZ2 KIAA1886 ZIMP7 HRIHFB2007
Protein Name	ZMIZ2
Immunogen	Synthesized peptide derived from human ZMIZ2 AA range: 512-562
Specificity	This antibody detects endogenous levels of ZMIZ2 at Human/Mouse
Formulation	Liquid in PBS containing 50% glycerol, 0.5% BSA and 0.02% sodium azide.
Source	Polyclonal, Rabbit,IgG
Purification	The antibody was affinity-purified from rabbit serum by affinity-chromatography using specific immunogen.
Dilution	WB 1: 500-2000
Concentration	1 mg/ml
Purity	≥90%
Storage Stability	-20°C/1 year
Synonyms	
Observed Band	
Cell Pathway	Nucleus . Detected at replication foci throughout S phase.
Tissue Specificity	Expressed most abundantly in testis with lower levels in heart, brain, pancreas, prostate and ovary.
Function	domain:The C-terminal proline-rich domain possesses a significant intrinsic transcriptional activity. This activity is inhibited by the N-terminus in the full-length protein.,function:Increases ligand-dependent transcriptional activity of AR and other nuclear hormone receptors.,similarity:Contains 1 SP-RING-type zinc finger.,subcellular location:Detected at replication foci throughout S phase.,subunit:Interacts with AR, SMARCA4/BRG1 and SMARCE1/BAF57. Interaction with either SMARCA4 and SMARCE1 enhances AR-mediated transcription.,tissue specificity:Expressed most abundantly in testis with lower levels in heart, brain, pancreas, prostate and ovary.,
Background	ZMIZ2 and ZMIZ1 (MIM 607159) are members of a PIAS (see MIM 603566)-like family of proteins that interact with nuclear hormone receptors. ZMIZ2 interacts

Nanjing BYabscience technology Co.,Ltd



with androgen receptor (AR; MIM 313700) and enhances AR-mediated transcription (Huang et al., 2005 [PubMed 16051670]).[supplied by OMIM, May 2010],

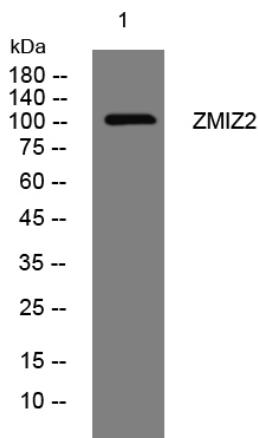
matters needing attention

Avoid repeated freezing and thawing!

Usage suggestions

This product can be used in immunological reaction related experiments. For more information, please consult technical personnel.

Products Images



Western blot analysis of lysates from VEC cells, primary antibody was diluted at 1:1000, 4°over night