



# TUSC1 rabbit pAb

<b>Catalog No</b>	BYab-11921
<b>Isotype</b>	IgG
<b>Reactivity</b>	Human; Mouse
<b>Applications</b>	WB
<b>Gene Name</b>	TUSC1
<b>Protein Name</b>	TUSC1
<b>Immunogen</b>	Synthesized peptide derived from human TUSC1 AA range: 120-170
<b>Specificity</b>	This antibody detects endogenous levels of TUSC1 at Human/Mouse
<b>Formulation</b>	Liquid in PBS containing 50% glycerol, 0.5% BSA and 0.02% sodium azide.
<b>Source</b>	Polyclonal, Rabbit,IgG
<b>Purification</b>	The antibody was affinity-purified from rabbit serum by affinity-chromatography using specific immunogen.
<b>Dilution</b>	WB 1: 500-2000
<b>Concentration</b>	1 mg/ml
<b>Purity</b>	≥90%
<b>Storage Stability</b>	-20°C/1 year
<b>Synonyms</b>	
<b>Observed Band</b>	
<b>Cell Pathway</b>	
<b>Tissue Specificity</b>	Widely expressed at low level. Expressed at higher level in testis, weakly expressed in muscle, colon, lung and spleen. Not detected in 3 non small cell lung carcinoma (NSCLC) cell lines with homozygous deletion of the 9p region, while it is down-regulated in 3 other tumor cell lines.
<b>Function</b>	tissue specificity:Widely expressed at low level. Expressed at higher level in testis, weakly expressed in muscle, colon, lung and spleen. Not detected in 3 non small cell lung carcinoma (NSCLC) cell lines with homozygous deletion of the 9p region, while it is down-regulated in 3 other tumor cell lines.,
<b>Background</b>	This gene is located within the region of chromosome 9p that harbors tumor suppressor genes critical in carcinogenesis. It is an intronless gene which is downregulated in non-small-cell lung cancer and small-cell lung cancer cell lines, suggesting that it may play a role in lung tumorigenesis. [provided by RefSeq, Jul 2008],

Nanjing BYabscience technology Co.,Ltd



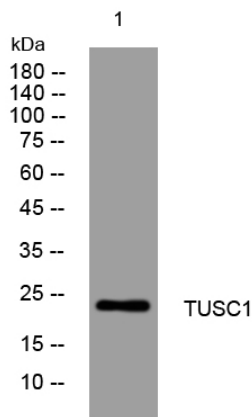
**matters needing attention**

Avoid repeated freezing and thawing!

**Usage suggestions**

This product can be used in immunological reaction related experiments. For more information, please consult technical personnel.

## Products Images



Western blot analysis of lysates from Jarkat cells, primary antibody was diluted at 1:1000, 4° over night