



CIR1A rabbit pAb

Catalog No	BYab-11919
Isotype	IgG
Reactivity	Human; Mouse
Applications	WB
Gene Name	CIRH1A KIAA1988
Protein Name	CIR1A
Immunogen	Synthesized peptide derived from human CIR1A AA range: 313-363
Specificity	This antibody detects endogenous levels of CIR1A at Human/Mouse
Formulation	Liquid in PBS containing 50% glycerol, 0.5% BSA and 0.02% sodium azide.
Source	Polyclonal, Rabbit,IgG
Purification	The antibody was affinity-purified from rabbit serum by affinity-chromatography using specific immunogen.
Dilution	WB 1: 500-2000
Concentration	1 mg/ml
Purity	≥90%
Storage Stability	-20°C/1 year
Synonyms	
Observed Band	
Cell Pathway	Nucleus, nucleolus . Chromosome . Found predominantly at the fibrillar center. .
Tissue Specificity	
Function	disease:Defects in CIRH1A are the cause of North American Indian childhood cirrhosis (NAIC) [MIM:604901]. NAIC is a severe autosomal recessive intrahepatic cholestasis, originally described in Ojibway-Cree children from northwestern Quebec. NAIC typically presents with transient neonatal jaundice, in a child who is otherwise healthy, and progresses to biliary cirrhosis and portal hypertension. Biochemical and histopathological features suggest involvement of the bile ducts rather than of the bile canaliculi. They include elevated gamma glutamyltransferase and alkaline phosphatase levels, and, typically, marked fibrosis around bile ducts. Clinically, NAIC is distinct from other nonsyndromic familial cholestases because of its marked cholangiopathic features and severe degree of fibrosis on liver histology.,similarity:Contains 11 WD repeats.,

Nanjing BYabscience technology Co.,Ltd



Background

This gene encodes a WD40-repeat-containing protein that is localized to the nucleolus. Mutation of this gene causes North American Indian childhood cirrhosis, a severe intrahepatic cholestasis that results in transient neonatal jaundice, and progresses to periportal fibrosis and cirrhosis in childhood and adolescence. Alternative splicing results in multiple transcript variants. [provided by RefSeq, Jan 2016],

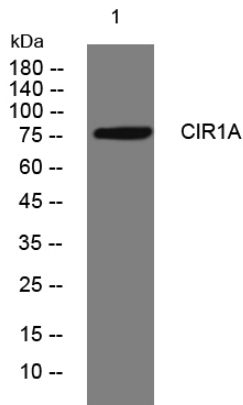
matters needing attention

Avoid repeated freezing and thawing!

Usage suggestions

This product can be used in immunological reaction related experiments. For more information, please consult technical personnel.

Products Images



Western blot analysis of lysates from Jarkat cells, primary antibody was diluted at 1:1000, 4° over night