



MXRA8 rabbit pAb

Catalog No	BYab-11918
Isotype	IgG
Reactivity	Human; Mouse;Rat
Applications	WB;IHC
Gene Name	MXRA8
Protein Name	MXRA8
Immunogen	Synthesized peptide derived from human MXRA8 AA range: 42-92
Specificity	This antibody detects endogenous levels of MXRA8 at Human/Mouse/Rat
Formulation	Liquid in PBS containing 50% glycerol, 0.5% BSA and 0.02% sodium azide.
Source	Polyclonal, Rabbit,IgG
Purification	The antibody was affinity-purified from rabbit serum by affinity-chromatography using specific immunogen.
Dilution	WB 1:500-2000;IHC-p 1:50-300
Concentration	1 mg/ml
Purity	≥90%
Storage Stability	-20°C/1 year
Synonyms	
Observed Band	
Cell Pathway	Cell membrane ; Single-pass type I membrane protein . Cell junction, tight junction . Cytoplasm . Cell projection, cilium membrane . Nucleus . Primarily localizes to the cell membrane (PubMed:23386276). Detected in the cilium of primary chondrocytes (By similarity). Highly expressed at areas of cell-cell contact and may localize to tight junctions (By similarity). Also found in the nucleus where it is detected in the soluble (as opposed to chromatin-bound) fraction (PubMed:23386276). .
Tissue Specificity	Detected in endothelial cells in mammary tissue, in both large vessels (left internal mammary artery) and small capillaries (vasa vasorum of the adventitia).
Function	function:May play a role in the maturation and maintenance of blood-brain barrier.,similarity:Contains 2 Ig-like V-type (immunoglobulin-like) domains.,
Background	

Nanjing BYabscience technology Co.,Ltd



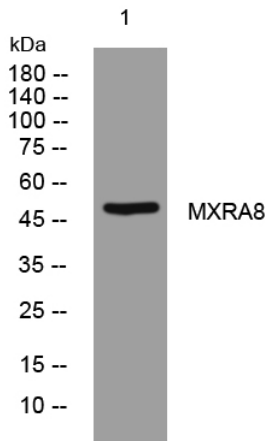
matters needing attention

Avoid repeated freezing and thawing!

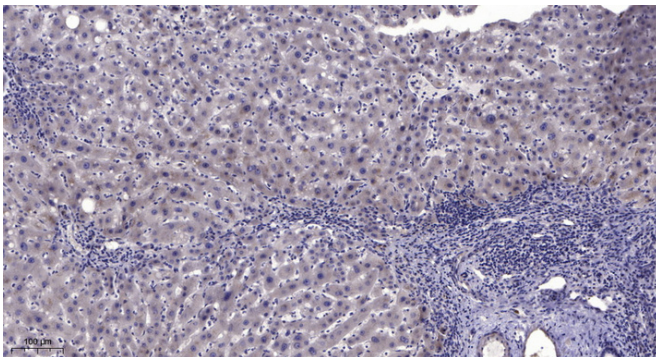
Usage suggestions

This product can be used in immunological reaction related experiments. For more information, please consult technical personnel.

Products Images



Western blot analysis of lysates from K562 cells, primary antibody was diluted at 1:1000, 4° over night



Immunohistochemical analysis of paraffin-embedded human liver cancer. 1, Antibody was diluted at 1:200(4° overnight). 2, Tris-EDTA, pH9.0 was used for antigen retrieval. 3, Secondary antibody was diluted at 1:200(room temperature, 45min).