



# TPC1 rabbit pAb

<b>Catalog No</b>	BYab-11914
<b>Isotype</b>	IgG
<b>Reactivity</b>	Human; Mouse;Rat
<b>Applications</b>	WB
<b>Gene Name</b>	TPCN1 KIAA1169 TPC1
<b>Protein Name</b>	TPC1
<b>Immunogen</b>	Synthesized peptide derived from human TPC1 AA range: 104-154
<b>Specificity</b>	This antibody detects endogenous levels of TPC1 at Human/Mouse/Rat
<b>Formulation</b>	Liquid in PBS containing 50% glycerol, 0.5% BSA and 0.02% sodium azide.
<b>Source</b>	Polyclonal, Rabbit,IgG
<b>Purification</b>	The antibody was affinity-purified from rabbit serum by affinity-chromatography using specific immunogen.
<b>Dilution</b>	WB 1: 500-2000
<b>Concentration</b>	1 mg/ml
<b>Purity</b>	≥90%
<b>Storage Stability</b>	-20°C/1 year
<b>Synonyms</b>	
<b>Observed Band</b>	
<b>Cell Pathway</b>	Lysosome membrane ; Multi-pass membrane protein . Endosome membrane ; Multi-pass membrane protein . Early endosome membrane ; Multi-pass membrane protein . Recycling endosome membrane ; Multi-pass membrane protein .
<b>Tissue Specificity</b>	Highest expression found in the heart and kidney, and lowest expression found in the spleen.
<b>Function</b>	domain:Each of the two internal repeats contains five hydrophobic transmembrane segments (S1, S2, S3, S5, S6) and one positively charged transmembrane segment (S4). S4 segments probably represent the voltage-sensor and are characterized by a series of positively charged amino acids at every third position.,function:May function as one of the major voltage-gated Ca(2+) channel (VDCC) across the plasma membrane.,similarity:Belongs to the calcium channel alpha-1 subunit (TC 1.A.1.11) family.,subunit:Dimer .,tissue specificity:Highest expression found in the heart and kidney, and lowest expression found in the spleen.,

Nanjing BYabscience technology Co.,Ltd



**Background**

Voltage-gated Ca(2+) and Na+ channels have 4 homologous domains, each containing 6 transmembrane segments, S1 to S6. TPCN1 is similar to these channels, but it has only 2 domains containing S1 to S6 (Ishibashi et al., 2000 [PubMed 10753632]).[supplied by OMIM, Mar 2008],

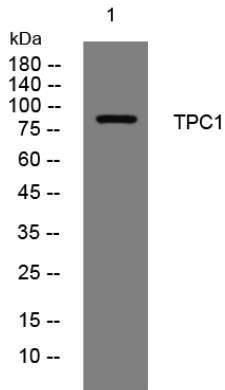
**matters needing attention**

Avoid repeated freezing and thawing!

**Usage suggestions**

This product can be used in immunological reaction related experiments. For more information, please consult technical personnel.

**Products Images**



Western blot analysis of lysates from HpeG2 cells, primary antibody was diluted at 1:1000, 4° over night