



LCMT2 rabbit pAb

Catalog No	BYab-11912
Isotype	IgG
Reactivity	Human; Mouse;Rat
Applications	WB;ELISA;IHC
Gene Name	LCMT2 KIAA0547 TYW4
Protein Name	LCMT2
Immunogen	Synthesized peptide derived from human LCMT2 AA range: 298-348
Specificity	This antibody detects endogenous levels of LCMT2 at Human/Mouse/Rat
Formulation	Liquid in PBS containing 50% glycerol, 0.5% BSA and 0.02% sodium azide.
Source	Polyclonal, Rabbit,IgG
Purification	The antibody was affinity-purified from rabbit serum by affinity-chromatography using specific immunogen.
Dilution	WB 1:500-2000;IHC-p 1:50-300; ELISA 2000-20000
Concentration	1 mg/ml
Purity	≥90%
Storage Stability	-20°C/1 year
Synonyms	
Observed Band	
Cell Pathway	cytoplasm,cytosol,
Tissue Specificity	
Function	function:Probable S-adenosyl-L-methionine-dependent methyltransferase that acts as a component of the wybutosine biosynthesis pathway. Wybutosine is a hyper modified guanosine with a tricyclic base found at the 3'-position adjacent to the anticodon of eukaryotic phenylalanine tRNA (By similarity). May methylate the carboxyl group of leucine residues to form alpha-leucine ester residues.,pathway:tRNA modification; wybutosine-tRNA(Phe) biosynthesis.,similarity:Belongs to the methyltransferase superfamily. LCMT family.,subunit:Interacts with RNF144B/IBRDC2.,
Background	The protein encoded by this intronless gene belongs to the highly variable methyltransferase superfamily. This gene is the inferred homolog of the Saccharomyces cerevisiae carboxymethyltransferase gene PPM2 that is

Nanjing BYabscience technology Co.,Ltd



essential for the synthesis of the hypermodified guanosine Wybutosine (yW).
[provided by RefSeq, Jul 2008],

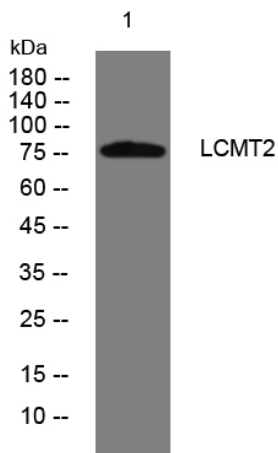
matters needing attention

Avoid repeated freezing and thawing!

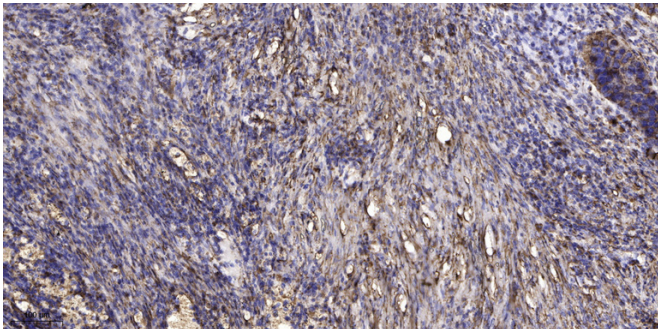
Usage suggestions

This product can be used in immunological reaction related experiments. For more information, please consult technical personnel.

Products Images



Western blot analysis of lysates from PC-12 cells,
primary antibody was diluted at 1:1000, 4° over night



Immunohistochemical analysis of paraffin-embedded human Squamous cell carcinoma of lung. 1, Antibody was diluted at 1:200(4° overnight). 2, Tris-EDTA,pH9.0 was used for antigen retrieval. 3,Secondary antibody was diluted at 1:200(room temperature, 45min).