



ATG12 rabbit pAb

Catalog No	BYab-11906
Isotype	IgG
Reactivity	Human; Mouse;Rat
Applications	WB
Gene Name	ATG12 APG12 APG12L
Protein Name	ATG12
Immunogen	Synthesized peptide derived from human ATG12 AA range: 80-130
Specificity	This antibody detects endogenous levels of ATG12 at Human/Mouse/Rat
Formulation	Liquid in PBS containing 50% glycerol, 0.5% BSA and 0.02% sodium azide.
Source	Polyclonal, Rabbit,IgG
Purification	The antibody was affinity-purified from rabbit serum by affinity-chromatography using specific immunogen.
Dilution	WB 1: 500-2000
Concentration	1 mg/ml
Purity	≥90%
Storage Stability	-20°C/1 year
Synonyms	
Observed Band	
Cell Pathway	Cytoplasm . Preautophagosomal structure membrane ; Peripheral membrane protein . TECPR1 recruits the ATG12-ATG5 conjugate to the autolysosomal membrane.
Tissue Specificity	Ubiquitous.
Function	function:Required for autophagy.,similarity:Belongs to the ATG12 family.,subunit:Conjugated to ATG5.,tissue specificity:Ubiquitous.,
Background	Autophagy is a process of bulk protein degradation in which cytoplasmic components, including organelles, are enclosed in double-membrane structures called autophagosomes and delivered to lysosomes or vacuoles for degradation. ATG12 is the human homolog of a yeast protein involved in autophagy (Mizushima et al., 1998 [PubMed 9852036]).[supplied by OMIM, Mar 2008],
matters needing attention	Avoid repeated freezing and thawing!

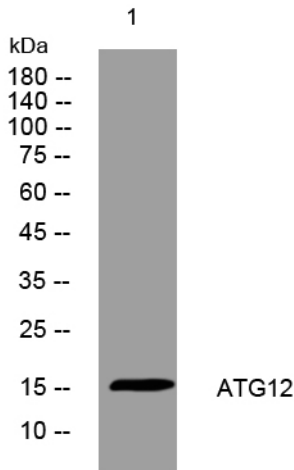
Nanjing BYabscience technology Co.,Ltd



Usage suggestions

This product can be used in immunological reaction related experiments. For more information, please consult technical personnel.

Products Images



Western blot analysis of lysates from HpeG2 cells, primary antibody was diluted at 1:1000, 4° over night