



TULP3 rabbit pAb

Catalog No	BYab-11904
Isotype	IgG
Reactivity	Human; Mouse
Applications	WB
Gene Name	TULP3 TUBL3
Protein Name	TULP3
Immunogen	Synthesized peptide derived from human TULP3 AA range: 257-307
Specificity	This antibody detects endogenous levels of TULP3 at Human/Mouse
Formulation	Liquid in PBS containing 50% glycerol, 0.5% BSA and 0.02% sodium azide.
Source	Polyclonal, Rabbit,IgG
Purification	The antibody was affinity-purified from rabbit serum by affinity-chromatography using specific immunogen.
Dilution	WB 1: 500-2000
Concentration	1 mg/ml
Purity	≥90%
Storage Stability	-20°C/1 year
Synonyms	
Observed Band	
Cell Pathway	Nucleus. Cell membrane. Cell projection, cilium . Cytoplasm . Secreted . Does not have a cleavable signal peptide and is secreted by a non-conventional pathway (By similarity). Translocates from the plasma membrane to the nucleus upon activation of guanine nucleotide-binding protein G(q) subunit alpha. .
Tissue Specificity	Expressed at high levels in testis, ovaries, thyroid, and spinal chord.
Function	similarity:Belongs to the TUB family.,tissue specificity:Expressed at high levels in testis, ovaries, thyroid, and spinal chord.,
Background	This gene encodes a member of the tubby gene family of bipartite transcription factors. Members of this family have been identified in plants, vertebrates, and invertebrates, and they share a conserved N-terminal transcription activation region and a conserved C-terminal DNA and phosphatidylinositol-phosphate binding region. The encoded protein binds to phosphoinositides in the plasma membrane via its C-terminal region and probably functions as a membrane-bound transcription regulator that translocates to the nucleus in response to

Nanjing BYabscience technology Co.,Ltd



phosphoinositide hydrolysis, for instance, induced by G-protein-coupled-receptor signaling. It plays an important role in neuronal development and function. Two transcript variants encoding distinct isoforms have been identified for this gene. [provided by RefSeq, May 2009],

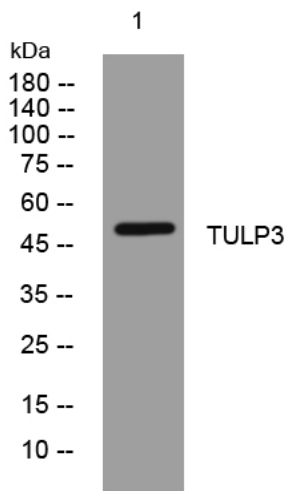
matters needing attention

Avoid repeated freezing and thawing!

Usage suggestions

This product can be used in immunological reaction related experiments. For more information, please consult technical personnel.

Products Images



Western blot analysis of lysates from HeLa cells, primary antibody was diluted at 1:1000, 4° over night