



SDK1 rabbit pAb

Catalog No	BYab-11895
Isotype	IgG
Reactivity	Human; Mouse
Applications	WB;IHC
Gene Name	SDK1
Protein Name	SDK1
Immunogen	Synthesized peptide derived from human SDK1 AA range: 962-1012
Specificity	This antibody detects endogenous levels of SDK1 at Human/Mouse
Formulation	Liquid in PBS containing 50% glycerol, 0.5% BSA and 0.02% sodium azide.
Source	Polyclonal, Rabbit,IgG
Purification	The antibody was affinity-purified from rabbit serum by affinity-chromatography using specific immunogen.
Dilution	WB 1:500-2000;IHC-p 1:50-300
Concentration	1 mg/ml
Purity	≥90%
Storage Stability	-20°C/1 year
Synonyms	
Observed Band	
Cell Pathway	Cell membrane ; Single-pass type I membrane protein . Cell junction, synapse .
Tissue Specificity	Up-regulated in glomeruli in HIV-associated nephropathy. In diseased glomeruli, significantly overexpressed and the expression is no longer restricted to mesangial cells but includes podocytes and parietal epithelial cells (PubMed:15213259).
Function	function:Cell adhesion protein that guides axonal terminals to specific synapses in developing neurons. Dysregulation of this protein may play an important role in podocyte dysfunction in HIV-associated nephropathy.,similarity:Contains 13 fibronectin type-III domains.,similarity:Contains 6 Ig-like C2-type (immunoglobulin-like) domains.,tissue specificity:Up-regulated in glomeruli in HIV-associated nephropathy. In diseased glomeruli, significantly overexpressed and the expression is no longer restricted to mesangial cells but includes podocytes and parietal epithelial cells.,

Nanjing BYabscience technology Co.,Ltd



Background

The protein encoded by this gene is a member of the immunoglobulin superfamily. The protein contains six immunoglobulin-like domains and thirteen fibronectin type III domains. Fibronectin type III domains are present in both extracellular and intracellular proteins and tandem repeats are known to contain binding sites for DNA, heparin and the cell surface. Alternative splicing results in multiple transcript variants. [provided by RefSeq, Jul 2016],

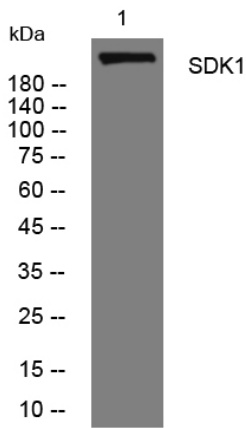
matters needing attention

Avoid repeated freezing and thawing!

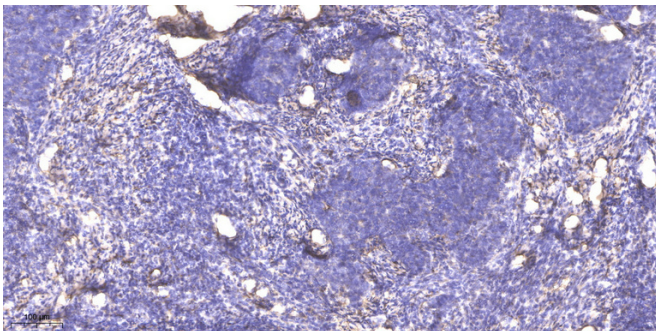
Usage suggestions

This product can be used in immunological reaction related experiments. For more information, please consult technical personnel.

Products Images



Western blot analysis of lysates from SW480 cells, primary antibody was diluted at 1:1000, 4° over night



Immunohistochemical analysis of paraffin-embedded human cervical carcinoma. 1, Antibody was diluted at 1:200(4° overnight). 2, Tris-EDTA, pH9.0 was used for antigen retrieval. 3, Secondary antibody was diluted at 1:200(room temperature, 45min).