



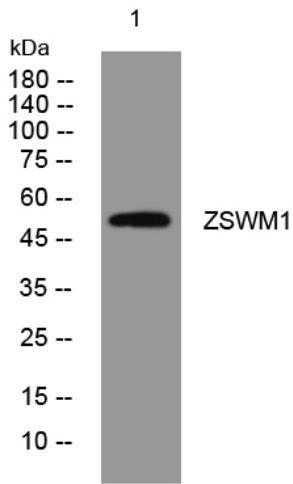
ZSWM1 rabbit pAb

Catalog No	BYab-11893
Isotype	IgG
Reactivity	Human; Mouse
Applications	WB
Gene Name	ZSWIM1 C20orf162
Protein Name	ZSWM1
Immunogen	Synthesized peptide derived from human ZSWM1 AA range: 252-302
Specificity	This antibody detects endogenous levels of ZSWM1 at Human/Mouse
Formulation	Liquid in PBS containing 50% glycerol, 0.5% BSA and 0.02% sodium azide.
Source	Polyclonal, Rabbit,IgG
Purification	The antibody was affinity-purified from rabbit serum by affinity-chromatography using specific immunogen.
Dilution	WB 1: 500-2000
Concentration	1 mg/ml
Purity	≥90%
Storage Stability	-20°C/1 year
Synonyms	
Observed Band	
Cell Pathway	nucleus,
Tissue Specificity	
Function	similarity:Contains 1 SWIM-type zinc finger.,
Background	
matters needing attention	Avoid repeated freezing and thawing!
Usage suggestions	This product can be used in immunological reaction related experiments. For more information, please consult technical personnel.

Nanjing BYabscience technology Co.,Ltd



Products Images



Western blot analysis of lysates from AD293 cells,
primary antibody was diluted at 1:1000, 4° over night