



# SIN1 rabbit pAb

<b>Catalog No</b>	BYab-11892
<b>Isotype</b>	IgG
<b>Reactivity</b>	Human; Mouse;Rat
<b>Applications</b>	WB;ELISA;IHC
<b>Gene Name</b>	MAPKAP1 MIP1 SIN1
<b>Protein Name</b>	SIN1
<b>Immunogen</b>	Synthesized peptide derived from human SIN1 AA range: 193-243
<b>Specificity</b>	This antibody detects endogenous levels of SIN1 at Human/Mouse/Rat
<b>Formulation</b>	Liquid in PBS containing 50% glycerol, 0.5% BSA and 0.02% sodium azide.
<b>Source</b>	Polyclonal, Rabbit,IgG
<b>Purification</b>	The antibody was affinity-purified from rabbit serum by affinity-chromatography using specific immunogen.
<b>Dilution</b>	WB 1:500-2000;IHC-p 1:50-300; ELISA 2000-20000
<b>Concentration</b>	1 mg/ml
<b>Purity</b>	≥90%
<b>Storage Stability</b>	-20°C/1 year
<b>Synonyms</b>	
<b>Observed Band</b>	
<b>Cell Pathway</b>	Cell membrane; Peripheral membrane protein. Cytoplasmic vesicle. Nucleus.
<b>Tissue Specificity</b>	Ubiquitously expressed, with highest levels in heart and skeletal muscle.
<b>Function</b>	function:Essential component of the TORC2 complex, which plays a critical role in AKT1 'Ser-473' phosphorylation, and may modulate the phosphorylation of PKCA and regulate actin cytoskeleton organization. Inhibits MAP3K2 by preventing its dimerization and autophosphorylation. Inhibits HRAS and KRAs signaling. Enhances osmotic stress-induced phosphorylation of ATF2 and ATF2-mediated transcription.,similarity:Belongs to the SIN1 family.,subunit:All isoforms except isoform 4 are able to be part of the target of rapamycin 2 complex (TORC2) comprised of FRAP1, LST8, PROTOR1, RICTOR and MAPKAP1. Interacts with ATF2, MAP3K2 and MAPK8. Interacts with GTP-bound HRAS and KRAS. Interacts with IFNAR2.,tissue specificity:Ubiquitously expressed, with highest levels in heart and skeletal muscle.,

Nanjing BYabscience technology Co.,Ltd



### Background

This gene encodes a protein that is highly similar to the yeast SIN1 protein, a stress-activated protein kinase. Alternatively spliced transcript variants encoding distinct isoforms have been described. Alternate polyadenylation sites as well as alternate 3' UTRs have been identified for transcripts of this gene. [provided by RefSeq, Jul 2008],

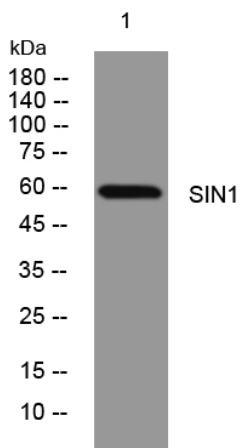
### matters needing attention

Avoid repeated freezing and thawing!

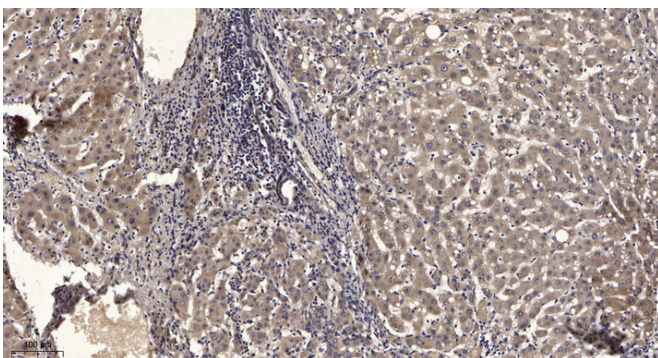
### Usage suggestions

This product can be used in immunological reaction related experiments. For more information, please consult technical personnel.

## Products Images



Western blot analysis of lysates from U2OS cells, primary antibody was diluted at 1:1000, 4° over night



Immunohistochemical analysis of paraffin-embedded human liver cancer. 1, Antibody was diluted at 1:200(4° overnight). 2, Tris-EDTA, pH9.0 was used for antigen retrieval. 3, Secondary antibody was diluted at 1:200(room temperature, 45min).