



AL1L2 rabbit pAb

Catalog No	BYab-11886
Isotype	IgG
Reactivity	Human; Mouse
Applications	WB
Gene Name	ALDH1L2
Protein Name	AL1L2
Immunogen	Synthesized peptide derived from human AL1L2 AA range: 74-124
Specificity	This antibody detects endogenous levels of AL1L2 at Human/Mouse
Formulation	Liquid in PBS containing 50% glycerol, 0.5% BSA and 0.02% sodium azide.
Source	Polyclonal, Rabbit,IgG
Purification	The antibody was affinity-purified from rabbit serum by affinity-chromatography using specific immunogen.
Dilution	WB 1: 500-2000
Concentration	1 mg/ml
Purity	≥90%
Storage Stability	-20°C/1 year
Synonyms	
Observed Band	
Cell Pathway	Mitochondrion .
Tissue Specificity	Highly expressed in pancreas, heart, brain and skeletal muscle.
Function	catalytic activity:10-formyltetrahydrofolate + NADP(+) + H(2)O = tetrahydrofolate + CO(2) + NADPH.,sequence caution:Wrong choice of CDS.,similarity:Belongs to the aldehyde dehydrogenase family.,similarity:Contains 1 acyl carrier domain.,similarity:In the C-terminal section; belongs to the aldehyde dehydrogenase family. ALDH1L subfamily.,similarity:In the N-terminal section; belongs to the GART family.,
Background	This gene encodes a member of both the aldehyde dehydrogenase superfamily and the formyl transferase superfamily. This member is the mitochondrial form of 10-formyltetrahydrofolate dehydrogenase (FDH), which converts 10-formyltetrahydrofolate to tetrahydrofolate and CO2 in an NADP(+)-dependent reaction, and plays an essential role in the distribution of one-carbon groups

Nanjing BYabscience technology Co.,Ltd



between the cytosolic and mitochondrial compartments of the cell. Alternatively spliced transcript variants have been found for this gene.[provided by RefSeq, Oct 2010],

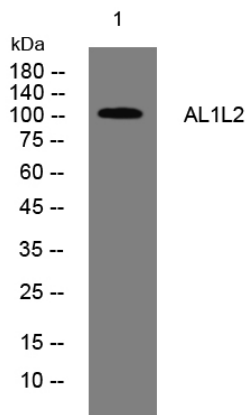
matters needing attention

Avoid repeated freezing and thawing!

Usage suggestions

This product can be used in immunological reaction related experiments. For more information, please consult technical personnel.

Products Images



Western blot analysis of lysates from Jarkat cells, primary antibody was diluted at 1:1000, 4° over night