



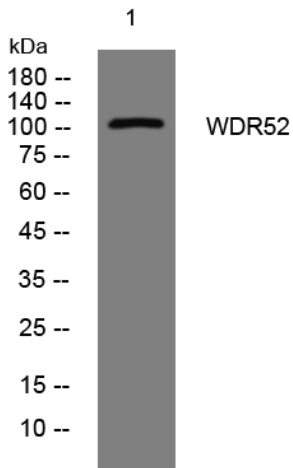
WDR52 rabbit pAb

Catalog No	BYab-11884
Isotype	IgG
Reactivity	Human;Rat;Mouse;
Applications	WB
Gene Name	WDR52
Protein Name	WDR52
Immunogen	Synthesized peptide derived from human WDR52 AA range: 492-542
Specificity	This antibody detects endogenous levels of WDR52 at Human
Formulation	Liquid in PBS containing 50% glycerol, 0.5% BSA and 0.02% sodium azide.
Source	Polyclonal, Rabbit,IgG
Purification	The antibody was affinity-purified from rabbit serum by affinity-chromatography using specific immunogen.
Dilution	WB 1: 500-2000
Concentration	1 mg/ml
Purity	≥90%
Storage Stability	-20°C/1 year
Synonyms	
Observed Band	
Cell Pathway	Cell projection, cilium, flagellum . Cytoplasm, cytoskeleton, flagellum axoneme .
Tissue Specificity	Testis-specific.
Function	similarity:Contains 9 WD repeats.,
Background	
matters needing attention	Avoid repeated freezing and thawing!
Usage suggestions	This product can be used in immunological reaction related experiments. For more information, please consult technical personnel.

Nanjing BYabscience technology Co.,Ltd



Products Images



Western blot analysis of lysates from HeLa cells,
primary antibody was diluted at 1:1000, 4° over night