



BACD3 rabbit pAb

Catalog No	BYab-11879
Isotype	IgG
Reactivity	Human; Mouse;Rat
Applications	WB
Gene Name	KCTD10 ULR061 MSTP028
Protein Name	BACD3
Immunogen	Synthesized peptide derived from human BACD3 AA range: 67-117
Specificity	This antibody detects endogenous levels of BACD3 at Human/Mouse/Rat
Formulation	Liquid in PBS containing 50% glycerol, 0.5% BSA and 0.02% sodium azide.
Source	Polyclonal, Rabbit,IgG
Purification	The antibody was affinity-purified from rabbit serum by affinity-chromatography using specific immunogen.
Dilution	WB 1: 500-2000
Concentration	1 mg/ml
Purity	≥90%
Storage Stability	-20°C/1 year
Synonyms	
Observed Band	
Cell Pathway	Nucleus .
Tissue Specificity	
Function	similarity:Belongs to the KCTD10/KCTD13/TNFAIP1 family.,similarity:Contains 1 BTB (POZ) domain.,subunit:Interacts with PCNA and DNA polymerase delta subunit 2/POLD2.,
Background	The protein encoded by this gene binds proliferating cell nuclear antigen (PCNA) and may be involved in DNA synthesis and cell proliferation. In addition, the encoded protein may be a tumor suppressor. Several protein-coding and non-protein coding transcript variants have been found for this gene. [provided by RefSeq, Dec 2015],
matters needing attention	Avoid repeated freezing and thawing!

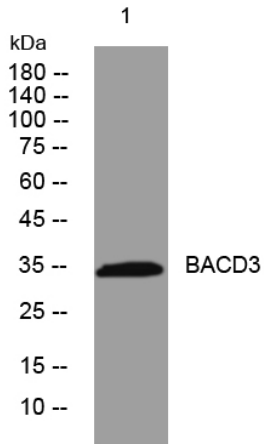
Nanjing BYabscience technology Co.,Ltd



Usage suggestions

This product can be used in immunological reaction related experiments. For more information, please consult technical personnel.

Products Images



Western blot analysis of lysates from MCF-7 cells, primary antibody was diluted at 1:1000, 4° over night