



# GRCR1 rabbit pAb

<b>Catalog No</b>	BYab-11876
<b>Isotype</b>	IgG
<b>Reactivity</b>	Human; Mouse
<b>Applications</b>	WB
<b>Gene Name</b>	GRXCR1 DFNB25
<b>Protein Name</b>	GRCR1
<b>Immunogen</b>	Synthesized peptide derived from human GRCR1 AA range: 132-182
<b>Specificity</b>	This antibody detects endogenous levels of GRCR1 at Human/Mouse
<b>Formulation</b>	Liquid in PBS containing 50% glycerol, 0.5% BSA and 0.02% sodium azide.
<b>Source</b>	Polyclonal, Rabbit,IgG
<b>Purification</b>	The antibody was affinity-purified from rabbit serum by affinity-chromatography using specific immunogen.
<b>Dilution</b>	WB 1: 500-2000
<b>Concentration</b>	1 mg/ml
<b>Purity</b>	≥90%
<b>Storage Stability</b>	-20°C/1 year
<b>Synonyms</b>	
<b>Observed Band</b>	
<b>Cell Pathway</b>	Cell projection, stereocilium . Cell projection, microvillus . Cell projection, kinocilium . In the inner ear, localized to stereocilia, apical microvilli of sensory cells and kinocilia. .
<b>Tissue Specificity</b>	Expressed at low levels in adult lung, brain and duodenum with moderate levels in testis. Highly expressed in fetal cochlea.
<b>Function</b>	similarity:Belongs to the GRXCR1 family.,similarity:Contains 1 glutaredoxin domain.,
<b>Background</b>	This gene is one of 60 loci associated with autosomal-recessive nonsyndromic hearing impairment. This gene encodes a protein which contains GRX-like domains; these domains play a role in the S-glutathionylation of proteins and may be involved in actin organization in hair cells. [provided by RefSeq, Sep 2010],
<b>matters needing attention</b>	Avoid repeated freezing and thawing!

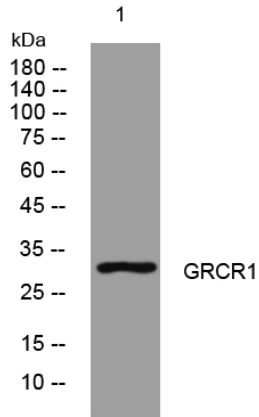
Nanjing BYabscience technology Co.,Ltd



### Usage suggestions

This product can be used in immunological reaction related experiments. For more information, please consult technical personnel.

## Products Images



Western blot analysis of lysates from PC-12 cells, primary antibody was diluted at 1:1000, 4° over night