



CTGE9 rabbit pAb

| | |
|---------------------------|--|
| Catalog No | BYab-11864 |
| Isotype | IgG |
| Reactivity | Human;Rat;Mouse; |
| Applications | WB |
| Gene Name | CTAGE9 |
| Protein Name | CTGE9 |
| Immunogen | Synthesized peptide derived from human CTGE9 AA range: 294-344 |
| Specificity | This antibody detects endogenous levels of CTGE9 at Human |
| Formulation | Liquid in PBS containing 50% glycerol, 0.5% BSA and 0.02% sodium azide. |
| Source | Polyclonal, Rabbit,IgG |
| Purification | The antibody was affinity-purified from rabbit serum by affinity-chromatography using specific immunogen. |
| Dilution | WB 1: 500-2000 |
| Concentration | 1 mg/ml |
| Purity | ≥90% |
| Storage Stability | -20°C/1 year |
| Synonyms | |
| Observed Band | |
| Cell Pathway | Membrane ; Single-pass membrane protein . |
| Tissue Specificity | |
| Function | disease:Autoantigen found several cancer types, including benign meningioma and cutaneous T-cell lymphoma (CTCL). Isoform 5A and isoform 5B are recognized by patients' sera with tumor specimen of various origins.,disease:Tumor-associated antigen found in several cutaneous T-cell lymphoma (CTCL). Also found in colorectal and breast carcinomas, head and neck squamous cell carcinomas and melanoma.,function:Tumor-associated antigen.,sequence caution:Translation N-terminally extended.,similarity:Belongs to the cTAGE family.,tissue specificity:At the protein level, isoform 5A is expressed only in testis. Other isoforms are expressed in several other normal tissues, including brain, muscle and cranial skin. Isoform 5A (at the protein level) and isoform 5B are expressed in cutaneous T-cell lymphoma (CTCL) cell lines, colorectal carcinomas, breast carcinomas and melanoma. Isoform 5B, but not isof |

Nanjing BYabscience technology Co.,Ltd



Background

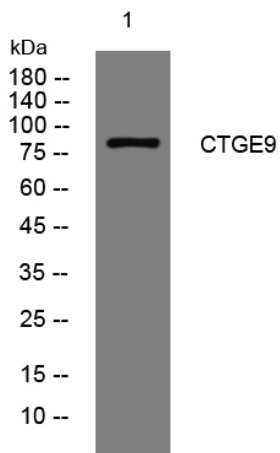
matters needing attention

Avoid repeated freezing and thawing!

Usage suggestions

This product can be used in immunological reaction related experiments. For more information, please consult technical personnel.

Products Images



Western blot analysis of lysates from SH-SY5Y cells, primary antibody was diluted at 1:1000, 4° over night