



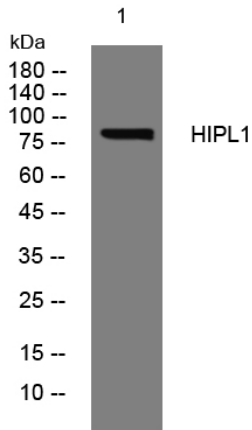
# HIPL1 rabbit pAb

|                                  |  |
|----------------------------------|--|
| <b>Catalog No</b>                | BYab-11862   |
| <b>Isotype</b>                   | IgG  |
| <b>Reactivity</b>                | Human; Mouse   |
| <b>Applications</b>              | WB   |
| <b>Gene Name</b>                 | HHIPL1 HHIP2 KIAA1822 UNQ9245/PRO34761   |
| <b>Protein Name</b>              | HIPL1  |
| <b>Immunogen</b>                 | Synthesized peptide derived from human HIPL1 AA range: 730-780   |
| <b>Specificity</b>               | This antibody detects endogenous levels of HIPL1 at Human/Mouse  |
| <b>Formulation</b>               | Liquid in PBS containing 50% glycerol, 0.5% BSA and 0.02% sodium azide.  |
| <b>Source</b>                    | Polyclonal, Rabbit,IgG   |
| <b>Purification</b>              | The antibody was affinity-purified from rabbit serum by affinity-chromatography using specific immunogen.  |
| <b>Dilution</b>                  | WB 1: 500-2000   |
| <b>Concentration</b>             | 1 mg/ml  |
| <b>Purity</b>                    | ≥90%   |
| <b>Storage Stability</b>         | -20°C/1 year   |
| <b>Synonyms</b>                  |  |
| <b>Observed Band</b>             |  |
| <b>Cell Pathway</b>              | Secreted .   |
| <b>Tissue Specificity</b>        |  |
| <b>Function</b>                  | similarity:Belongs to the HHIP family.,similarity:Contains 1 SRCR domain.,   |
| <b>Background</b>                | This gene encodes a protein that belongs to the glucose/sorbose dehydrogenase family. The encoded protein also contains a domain that binds folate and reduced folic acid derivatives. [provided by RefSeq, Jul 2016], |
| <b>matters needing attention</b> | Avoid repeated freezing and thawing!   |
| <b>Usage suggestions</b>         | This product can be used in immunological reaction related experiments. For more information, please consult technical personnel.  |

**Nanjing BYabscience technology Co.,Ltd**



## Products Images



Western blot analysis of lysates from MCF-7 cells,  
primary antibody was diluted at 1:1000, 4° over night