



ERLN2 rabbit pAb

Catalog No	BYab-11847
Isotype	IgG
Reactivity	Human; Mouse;Rat
Applications	WB
Gene Name	ERLN2 C8orf2 SPFH2 UNQ2441/PRO5003/PRO9924
Protein Name	ERLN2
Immunogen	Synthesized peptide derived from human ERLN2 AA range: 239-289
Specificity	This antibody detects endogenous levels of ERLN2 at Human/Mouse/Rat
Formulation	Liquid in PBS containing 50% glycerol, 0.5% BSA and 0.02% sodium azide.
Source	Polyclonal, Rabbit,IgG
Purification	The antibody was affinity-purified from rabbit serum by affinity-chromatography using specific immunogen.
Dilution	WB 1: 500-2000
Concentration	1 mg/ml
Purity	≥90%
Storage Stability	-20°C/1 year
Synonyms	
Observed Band	
Cell Pathway	Endoplasmic reticulum membrane ; Single-pass type II membrane protein . Associated with lipid raft-like domains of the endoplasmic reticulum membrane.
Tissue Specificity	Ubiquitous.
Function	function:Plays an important role in the early steps of the endoplasmic reticulum-associated degradation (ERAD) pathway. Involved in ITPR1 degradation by the ERAD pathway.,similarity:Belongs to the band 7/mec-2 family.,subcellular location:Associated with lipid raft-like domains of the endoplasmic reticulum membrane.,subunit:Interacts with activated ITPR1, independently of the degree of ITPR1 polyubiquitination.,tissue specificity:Ubiquitous.,
Background	This gene encodes a member of the SPFH domain-containing family of lipid raft-associated proteins. The encoded protein is localized to lipid rafts of the endoplasmic reticulum and plays a critical role in inositol 1,4,5-trisphosphate (IP3) signaling by mediating ER-associated degradation of activated IP3 receptors.

Nanjing BYabscience technology Co.,Ltd



Mutations in this gene are a cause of spastic paraplegia-18 (SPG18). Alternatively spliced transcript variants encoding multiple isoforms have been observed for this gene. [provided by RefSeq, Feb 2012],

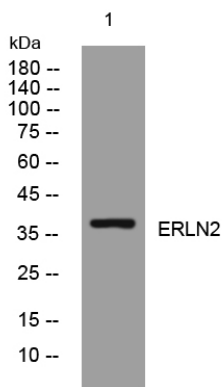
matters needing attention

Avoid repeated freezing and thawing!

Usage suggestions

This product can be used in immunological reaction related experiments. For more information, please consult technical personnel.

Products Images



Western blot analysis of lysates from HeLa cells, primary antibody was diluted at 1:1000, 4° over night