



# HERC3 rabbit pAb

<b>Catalog No</b>	BYab-11836
<b>Isotype</b>	IgG
<b>Reactivity</b>	Human;Rat;Mouse;
<b>Applications</b>	WB
<b>Gene Name</b>	HERC3 KIAA0032
<b>Protein Name</b>	HERC3
<b>Immunogen</b>	Synthesized peptide derived from human HERC3 AA range: 985-1035
<b>Specificity</b>	This antibody detects endogenous levels of HERC3 at Human
<b>Formulation</b>	Liquid in PBS containing 50% glycerol, 0.5% BSA and 0.02% sodium azide.
<b>Source</b>	Polyclonal, Rabbit,IgG
<b>Purification</b>	The antibody was affinity-purified from rabbit serum by affinity-chromatography using specific immunogen.
<b>Dilution</b>	WB 1: 500-2000
<b>Concentration</b>	1 mg/ml
<b>Purity</b>	≥90%
<b>Storage Stability</b>	-20°C/1 year
<b>Synonyms</b>	
<b>Observed Band</b>	
<b>Cell Pathway</b>	Cytoplasm. Cytoplasmic vesicle. Also found in vesicular-like structures.
<b>Tissue Specificity</b>	
<b>Function</b>	function:E3 ubiquitin-protein ligase which accepts ubiquitin from an E2 ubiquitin-conjugating enzyme in the form of a thioester and then directly transfers the ubiquitin to targeted substrates.,pathway:Protein modification; protein ubiquitination.,PTM:Ubiquitinated; which promotes degradation by the proteasome.,similarity:Contains 1 HECT (E6AP-type E3 ubiquitin-protein ligase) domain.,similarity:Contains 7 RCC1 repeats.,subcellular location:Also found in vesicular-like structures.,
<b>Background</b>	This gene encodes a member the HERC ubiquitin ligase family. The encoded protein is located in the cytosol and binds ubiquitin via a HECT domain. Mutations in this gene have been associated with colorectal and gastric carcinomas. Alternatively spliced transcript variants encoding multiple isoforms have been

Nanjing BYabscience technology Co.,Ltd



observed for this gene. [provided by RefSeq, Oct 2012],

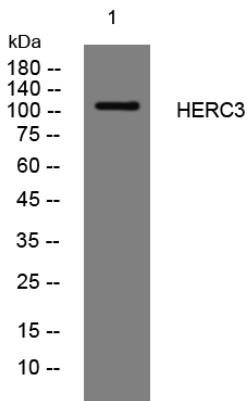
**matters needing attention**

Avoid repeated freezing and thawing!

**Usage suggestions**

This product can be used in immunological reaction related experiments. For more information, please consult technical personnel.

## Products Images



Western blot analysis of lysates from 3T3 cells, primary antibody was diluted at 1:1000, 4° over night