



# PCSK5 rabbit pAb

<b>Catalog No</b>	BYab-11835
<b>Isotype</b>	IgG
<b>Reactivity</b>	Human; Mouse;Rat
<b>Applications</b>	WB;ELISA;IHC
<b>Gene Name</b>	PCSK5 PC5 PC6
<b>Protein Name</b>	PCSK5
<b>Immunogen</b>	Synthesized peptide derived from human PCSK5 AA range: 1507-1557
<b>Specificity</b>	This antibody detects endogenous levels of PCSK5 at Human/Mouse/Rat
<b>Formulation</b>	Liquid in PBS containing 50% glycerol, 0.5% BSA and 0.02% sodium azide.
<b>Source</b>	Polyclonal, Rabbit,IgG
<b>Purification</b>	The antibody was affinity-purified from rabbit serum by affinity-chromatography using specific immunogen.
<b>Dilution</b>	WB 1:500-2000;IHC-p 1:50-300; ELISA 2000-20000
<b>Concentration</b>	1 mg/ml
<b>Purity</b>	≥90%
<b>Storage Stability</b>	-20°C/1 year
<b>Synonyms</b>	
<b>Observed Band</b>	
<b>Cell Pathway</b>	[Isoform PC6A]: Secreted. Secreted through the regulated secretory pathway. . ; [Isoform PC6B]: Endomembrane system; Single-pass type I membrane protein. Type I membrane protein localized to a paranuclear post-Golgi network compartment in communication with early endosomes. .
<b>Tissue Specificity</b>	Expressed in T-lymphocytes.
<b>Function</b>	alternative products:2 isoforms may be produced,catalytic activity:Release of mature proteins from their proproteins by cleavage of Arg-Xaa-Yaa-Arg- -Zaa bonds, where Xaa can be any amino acid and Yaa is Arg or Lys.,domain:The propeptide domain acts as an intramolecular chaperone assisting the folding of the zymogen within the endoplasmic reticulum.,function:Likely to represent a widespread endoprotease activity within the constitutive and regulated secretory pathway. Capable of cleavage at the RX(K/R)R consensus motif.,similarity:Belongs to the peptidase S8 family.,similarity:Contains 1 homo B/P domain.,similarity:Contains 1 PLAC domain.,tissue specificity:Expressed in T-lymphocytes.,

Nanjing BYabscience technology Co.,Ltd



## Background

This gene encodes a member of the subtilisin-like proprotein convertase family, which includes proteases that process protein and peptide precursors trafficking through regulated or constitutive branches of the secretory pathway. The encoded protein undergoes an initial autocatalytic processing event in the ER to generate a heterodimer which exits the ER. It then sorts to the trans-Golgi network where a second autocatalytic event takes place and the catalytic activity is acquired. This encoded protein is widely expressed and one of the seven basic amino acid-specific members which cleave their substrates at single or paired basic residues. It mediates posttranslational endoproteolytic processing for several integrin alpha subunits and is thought to process prorenin, pro-membrane type-1 matrix metalloproteinase and HIV-1 glycoprotein gp160. Alternative splicing results in multiple transcript variants, some of which encode distinct isoforms, including a protease packaged into dense core granules (PC5A) and a type 1 membrane bound protease (PC5B). [provided by RefSeq, May 2014],

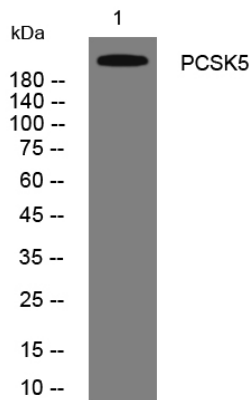
## matters needing attention

Avoid repeated freezing and thawing!

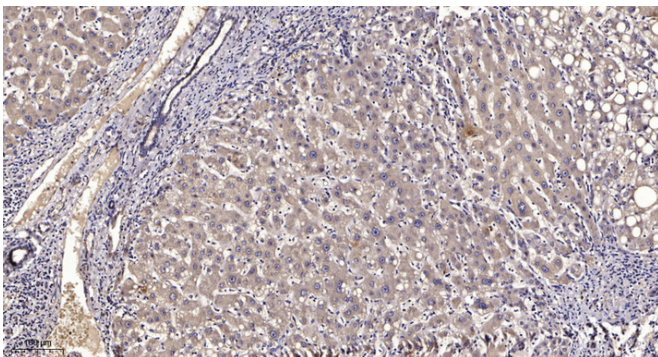
## Usage suggestions

This product can be used in immunological reaction related experiments. For more information, please consult technical personnel.

## Products Images



Western blot analysis of lysates from 293T cells, primary antibody was diluted at 1:1000, 4° over night



Immunohistochemical analysis of paraffin-embedded human liver cancer. 1, Antibody was diluted at 1:200(4° overnight). 2, Tris-EDTA, pH9.0 was used for antigen retrieval. 3, Secondary antibody was diluted at 1:200(room temperature, 45min).

Nanjing BYabscience technology Co.,Ltd