



STX12 rabbit pAb

Catalog No	BYab-11809
Isotype	IgG
Reactivity	Human; Mouse;Rat
Applications	WB;ELISA;IHC
Gene Name	STX12
Protein Name	STX12
Immunogen	Synthesized peptide derived from human STX12 AA range: 56-106
Specificity	This antibody detects endogenous levels of STX12 at Human/Mouse/Rat
Formulation	Liquid in PBS containing 50% glycerol, 0.5% BSA and 0.02% sodium azide.
Source	Polyclonal, Rabbit,IgG
Purification	The antibody was affinity-purified from rabbit serum by affinity-chromatography using specific immunogen.
Dilution	WB 1:500-2000;IHC-p 1:50-300; ELISA 2000-20000
Concentration	1 mg/ml
Purity	≥90%
Storage Stability	-20°C/1 year
Synonyms	
Observed Band	
Cell Pathway	Endosome membrane; Single-pass type IV membrane protein . Golgi apparatus membrane; Single-pass type IV membrane protein . Endomembrane system ; Single-pass type IV membrane protein ; Cytoplasmic side . Early endosome membrane ; Single-pass type IV membrane protein . Recycling endosome membrane ; Single-pass type IV membrane protein .
Tissue Specificity	
Function	function:SNARE that acts to regulate protein transport between late endosomes and the trans-Golgi network.,similarity:Belongs to the syntaxin family.,similarity:Contains 1 t-SNARE coiled-coil homology domain.,
Background	
matters needing attention	Avoid repeated freezing and thawing!

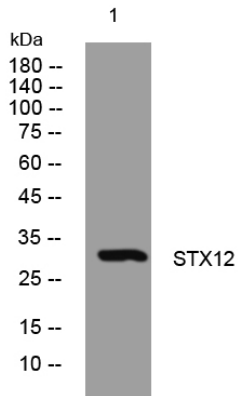
Nanjing BYabscience technology Co.,Ltd



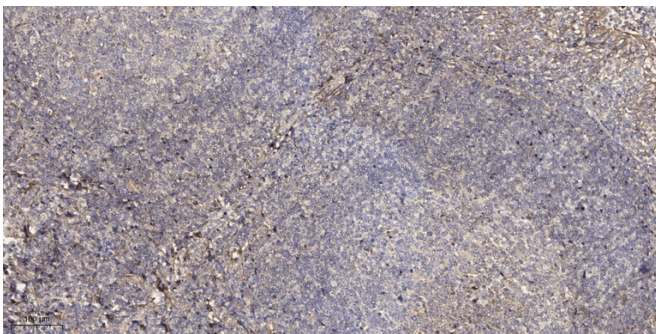
Usage suggestions

This product can be used in immunological reaction related experiments. For more information, please consult technical personnel.

Products Images



Western blot analysis of lysates from K562 cells, primary antibody was diluted at 1:1000, 4° over night



Immunohistochemical analysis of paraffin-embedded human tonsil. 1, Antibody was diluted at 1:200(4° overnight). 2, Tris-EDTA,pH9.0 was used for antigen retrieval. 3,Secondary antibody was diluted at 1:200(room temperature, 45min).