



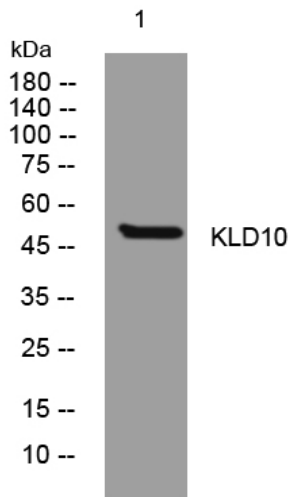
KLD10 rabbit pAb

Catalog No	BYab-11808
Isotype	IgG
Reactivity	Human; Mouse;Rat
Applications	WB;IHC
Gene Name	KLHDC10 KIAA0265
Protein Name	KLD10
Immunogen	Synthesized peptide derived from human KLD10 AA range: 9-59
Specificity	This antibody detects endogenous levels of KLD10 at Human/Mouse/Rat
Formulation	Liquid in PBS containing 50% glycerol, 0.5% BSA and 0.02% sodium azide.
Source	Polyclonal, Rabbit,IgG
Purification	The antibody was affinity-purified from rabbit serum by affinity-chromatography using specific immunogen.
Dilution	WB 1:500-2000;IHC-p 1:50-300
Concentration	1 mg/ml
Purity	≥90%
Storage Stability	-20°C/1 year
Synonyms	
Observed Band	
Cell Pathway	Nucleus . Cytoplasm .
Tissue Specificity	
Function	developmental stage:Expressed in fetal brain, liver, lung, kidney and placenta.,similarity:Contains 6 Kelch repeats.,
Background	
matters needing attention	Avoid repeated freezing and thawing!
Usage suggestions	This product can be used in immunological reaction related experiments. For more information, please consult technical personnel.

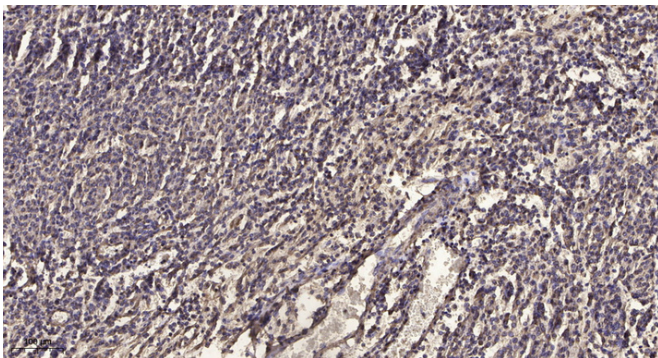
Nanjing BYabscience technology Co.,Ltd



Products Images



Western blot analysis of lysates from HpeG2 cells, primary antibody was diluted at 1:1000, 4° over night



Immunohistochemical analysis of paraffin-embedded human meningioma. 1, Antibody was diluted at 1:200(4° overnight). 2, Tris-EDTA, pH9.0 was used for antigen retrieval. 3, Secondary antibody was diluted at 1:200(room temperature, 45min).