



CLCA3 rabbit pAb

Catalog No	BYab-11798
Isotype	IgG
Reactivity	Human;Rat;Mouse;
Applications	WB
Gene Name	CLCA3P CLCA3
Protein Name	CLCA3
Immunogen	Synthesized peptide derived from human CLCA3 AA range: 56-106
Specificity	This antibody detects endogenous levels of CLCA3 at Human
Formulation	Liquid in PBS containing 50% glycerol, 0.5% BSA and 0.02% sodium azide.
Source	Polyclonal, Rabbit,IgG
Purification	The antibody was affinity-purified from rabbit serum by affinity-chromatography using specific immunogen.
Dilution	WB 1: 500-2000
Concentration	1 mg/ml
Purity	≥90%
Storage Stability	-20°C/1 year
Synonyms	
Observed Band	
Cell Pathway	Secreted .
Tissue Specificity	Expressed in the lung, trachea, spleen, thymus and mammary gland.
Function	PTM:N-glycosylated.,similarity:Belongs to the CLCR family.,tissue specificity:Expressed in the lung, trachea, spleen, thymus and mammary gland.,
Background	This gene is a transcribed pseudogene belonging to the calcium sensitive chloride conductance protein family. To date, all members of this gene family map to the same site on chromosome 1p31-p22 and share high degrees of homology in size, sequence and predicted structure, but differ significantly in their tissue distributions. This gene contains several nonsense codons compared to other family members that render the transcript a candidate for nonsense-mediated mRNA decay (NMD). Therefore, this gene is unlikely to be protein-coding. [provided by RefSeq, Jan 2009],

Nanjing BYabscience technology Co.,Ltd



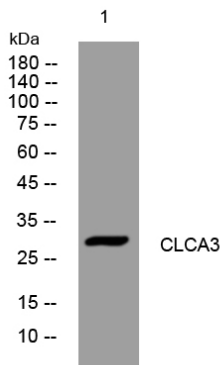
matters needing attention

Avoid repeated freezing and thawing!

Usage suggestions

This product can be used in immunological reaction related experiments. For more information, please consult technical personnel.

Products Images



Western blot analysis of lysates from U2OS cells, primary antibody was diluted at 1:1000, 4° over night