



LIN54 rabbit pAb

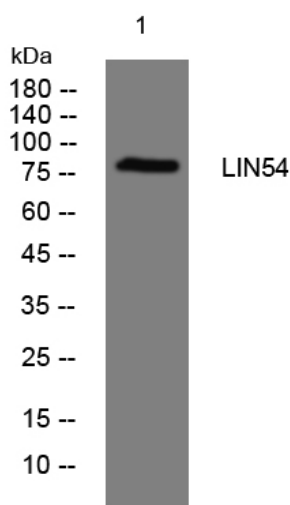
Catalog No	BYab-11775
Isotype	IgG
Reactivity	Human; Mouse;Rat
Applications	WB;ELISA;IHC
Gene Name	LIN54 CXCDC1 KIAA2037
Protein Name	LIN54
Immunogen	Synthesized peptide derived from human LIN54 AA range: 62-112
Specificity	This antibody detects endogenous levels of LIN54 at Human/Mouse/Rat
Formulation	Liquid in PBS containing 50% glycerol, 0.5% BSA and 0.02% sodium azide.
Source	Polyclonal, Rabbit,IgG
Purification	The antibody was affinity-purified from rabbit serum by affinity-chromatography using specific immunogen.
Dilution	WB 1:500-2000;IHC-p 1:50-300; ELISA 2000-20000
Concentration	1 mg/ml
Purity	≥90%
Storage Stability	-20°C/1 year
Synonyms	
Observed Band	
Cell Pathway	Nucleus .
Tissue Specificity	
Function	function:Component of the DREAM complex, a multiprotein complex that can both act as a transcription activator or repressor depending on the context. In G0 phase, the complex binds to more than 800 promoters and is required for repression of E2F target genes. In S phase, the complex selectively binds to the promoters of G2/M genes whose products are required for mitosis and participates in their cell cycle dependent activation.,similarity:Belongs to the lin-54 family.,similarity:Contains 2 CXC domains.,subunit:Component of the DREAM complex (also named LINC complex) at least composed of E2F4, E2F5, LIN9, LIN37, LIN52, LIN54, MYBL1, MYBL2, RBL1, RBL2, RBBP4, TFDP1 and TFDP2. The complex exists in quiescent cells where it represses cell cycle-dependent genes. It dissociates in S phase when LIN9, LIN37, LIN52 and LIN54 form a subcomplex that binds to MYBL2.,

Nanjing BYabscience technology Co.,Ltd

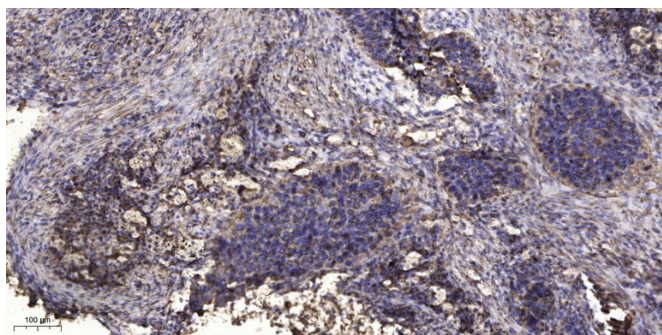


Background	LIN54 is a component of the LIN, or DREAM, complex, an essential regulator of cell cycle genes (Schmit et al., 2009 [PubMed 19725879]).[supplied by OMIM, Dec 2010],
matters needing attention	Avoid repeated freezing and thawing!
Usage suggestions	This product can be used in immunological reaction related experiments. For more information, please consult technical personnel.

Products Images



Western blot analysis of lysates from HeLa cells, primary antibody was diluted at 1:1000, 4° over night



Immunohistochemical analysis of paraffin-embedded human Squamous cell carcinoma of lung. 1, Antibody was diluted at 1:200(4° overnight). 2, Tris-EDTA,pH9.0 was used for antigen retrieval. 3,Secondary antibody was diluted at 1:200(room temperature, 45min).