



GSTO2 rabbit pAb

Catalog No	BYab-11774
Isotype	IgG
Reactivity	Human; Mouse;Rat
Applications	WB
Gene Name	GSTO2
Protein Name	GSTO2
Immunogen	Synthesized peptide derived from human GSTO2 AA range: 70-120
Specificity	This antibody detects endogenous levels of GSTO2 at Human/Mouse/Rat
Formulation	Liquid in PBS containing 50% glycerol, 0.5% BSA and 0.02% sodium azide.
Source	Polyclonal, Rabbit,IgG
Purification	The antibody was affinity-purified from rabbit serum by affinity-chromatography using specific immunogen.
Dilution	WB 1: 500-2000
Concentration	1 mg/ml
Purity	≥90%
Storage Stability	-20°C/1 year
Synonyms	
Observed Band	
Cell Pathway	cytoplasm,cytosol,extracellular exosome,
Tissue Specificity	Expressed in a range of tissues, including the liver, kidney, skeletal muscle and prostate. Strongest expression in the testis.
Function	catalytic activity:RX + glutathione = HX + R-S-glutathione.,similarity:Belongs to the GST superfamily. Omega family.,similarity:Contains 1 GST C-terminal domain.,similarity:Contains 1 GST N-terminal domain.,tissue specificity:Expressed in a range of tissues, including the liver, kidney, skeletal muscle and prostate. Strongest expression in the testis.,
Background	The protein encoded by this gene is an omega class glutathione S-transferase (GST). GSTs are involved in the metabolism of xenobiotics and carcinogens. Four transcript variants encoding different isoforms have been found for this gene.[provided by RefSeq, Jul 2010],

Nanjing BYabscience technology Co.,Ltd



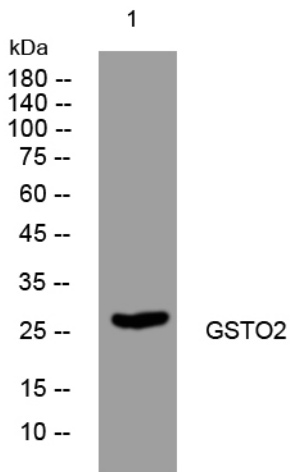
matters needing attention

Avoid repeated freezing and thawing!

Usage suggestions

This product can be used in immunological reaction related experiments. For more information, please consult technical personnel.

Products Images



Western blot analysis of lysates from HuvEc cells, primary antibody was diluted at 1:1000, 4° over night