



# ORAI2 rabbit pAb

|                                  |   |
|----------------------------------|---|
| <b>Catalog No</b>                | BYab-11773  |
| <b>Isotype</b>                   | IgG   |
| <b>Reactivity</b>                | Human; Mouse  |
| <b>Applications</b>              | WB  |
| <b>Gene Name</b>                 | ORAI2 C7orf19 CBCIP2 TMEM142B PP1729  |
| <b>Protein Name</b>              | ORAI2   |
| <b>Immunogen</b>                 | Synthesized peptide derived from human ORAI2 AA range: 39-89  |
| <b>Specificity</b>               | This antibody detects endogenous levels of ORAI2 at Human/Mouse   |
| <b>Formulation</b>               | Liquid in PBS containing 50% glycerol, 0.5% BSA and 0.02% sodium azide.   |
| <b>Source</b>                    | Polyclonal, Rabbit,IgG  |
| <b>Purification</b>              | The antibody was affinity-purified from rabbit serum by affinity-chromatography using specific immunogen.   |
| <b>Dilution</b>                  | WB 1: 500-2000  |
| <b>Concentration</b>             | 1 mg/ml   |
| <b>Purity</b>                    | ≥90%  |
| <b>Storage Stability</b>         | -20°C/1 year  |
| <b>Synonyms</b>                  |   |
| <b>Observed Band</b>             |   |
| <b>Cell Pathway</b>              | Membrane ; Multi-pass membrane protein .  |
| <b>Tissue Specificity</b>        |   |
| <b>Function</b>                  | caution:Product of a dubious gene prediction. Encoded in intron of OREI2.,function:Ca(2+) release-activated Ca(2+)-like (CRAC-like) channel subunit which mediates Ca(2+) influx and increase in Ca(2+)-selective current by synergy with the Ca(2+) sensor, STIM1.,similarity:Belongs to the Orai family., |
| <b>Background</b>                |   |
| <b>matters needing attention</b> | Avoid repeated freezing and thawing!  |

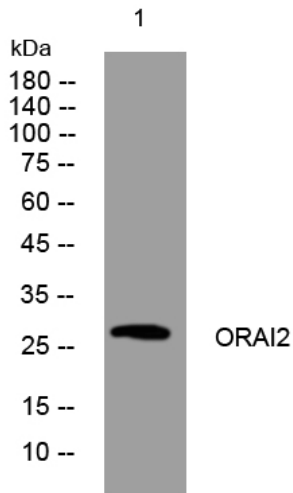
Nanjing BYabscience technology Co.,Ltd



### Usage suggestions

This product can be used in immunological reaction related experiments. For more information, please consult technical personnel.

## Products Images



Western blot analysis of lysates from MDA-MB cells, primary antibody was diluted at 1:1000, 4° over night