



UN13B rabbit pAb

Catalog No	BYab-11755
Isotype	IgG
Reactivity	Human; Mouse;Rat
Applications	WB
Gene Name	UNC13B UNC13
Protein Name	UN13B
Immunogen	Synthesized peptide derived from human UN13B AA range: 1325-1375
Specificity	This antibody detects endogenous levels of UN13B at Human/Mouse/Rat
Formulation	Liquid in PBS containing 50% glycerol, 0.5% BSA and 0.02% sodium azide.
Source	Polyclonal, Rabbit,IgG
Purification	The antibody was affinity-purified from rabbit serum by affinity-chromatography using specific immunogen.
Dilution	WB 1: 500-2000
Concentration	1 mg/ml
Purity	≥90%
Storage Stability	-20°C/1 year
Synonyms	
Observed Band	
Cell Pathway	Cytoplasm . Membrane ; Peripheral membrane protein . Cell membrane . Cell junction, synapse . Localized to synapses. Translocated to the plasma membrane in response to phorbol ester binding (By similarity). .
Tissue Specificity	Expressed in kidney cortical epithelial cells and brain.
Function	domain:The C2 domains are not involved in calcium-dependent phospholipid binding.,function:Plays a role in vesicle maturation during exocytosis as a target of the diacylglycerol second messenger pathway. Is involved in neurotransmitter release by acting in synaptic vesicle priming prior to vesicle fusion and participates in the activity-depending refilling of readily releasable vesicle pool (RRP). Essential for synaptic vesicle maturation in a subset of excitatory/glutamatergic but not inhibitory/GABA-mediated synapses.,similarity:Belongs to the unc-13 family.,similarity:Contains 1 MHD1 (MUNC13 homology domain 1) domain.,similarity:Contains 1 MHD2 (MUNC13 homology domain 2) domain.,similarity:Contains 1 phorbol-ester/DAG-type zinc finger.,similarity:Contains 3 C2 domains.,subcellular location:Localized to

Nanjing BYabscience technology Co.,Ltd



synapses. Translocated to the plasma membrane in response to phorbol ester binding.

Background

This gene is expressed in the kidney cortical epithelial cells and is upregulated by hyperglycemia. The encoded protein shares a high level of similarity to the rat homolog, and contains 3 C2 domains and a diacylglycerol-binding C1 domain. Hyperglycemia increases the levels of diacylglycerol, which has been shown to induce apoptosis in cells transfected with this gene and thus contribute to the renal cell complications of hyperglycemia. Studies in other species also indicate a role for this protein in the priming step of synaptic vesicle exocytosis. [provided by RefSeq, Jul 2008],

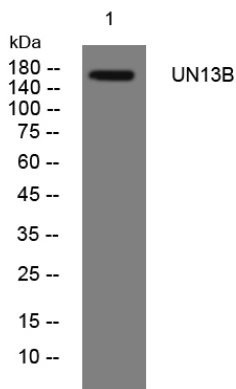
matters needing attention

Avoid repeated freezing and thawing!

Usage suggestions

This product can be used in immunological reaction related experiments. For more information, please consult technical personnel.

Products Images



Western blot analysis of lysates from MCF-7 cells, primary antibody was diluted at 1:1000, 4° over night