



SRGP1 rabbit pAb

Catalog No	BYab-11751
Isotype	IgG
Reactivity	Human; Mouse
Applications	WB
Gene Name	SRGAP1 ARHGAP13 KIAA1304
Protein Name	SRGP1
Immunogen	Synthesized peptide derived from human SRGP1 AA range: 159-209
Specificity	This antibody detects endogenous levels of SRGP1 at Human/Mouse
Formulation	Liquid in PBS containing 50% glycerol, 0.5% BSA and 0.02% sodium azide.
Source	Polyclonal, Rabbit,IgG
Purification	The antibody was affinity-purified from rabbit serum by affinity-chromatography using specific immunogen.
Dilution	WB 1: 500-2000
Concentration	1 mg/ml
Purity	≥90%
Storage Stability	-20°C/1 year
Synonyms	
Observed Band	
Cell Pathway	cytoplasm,cytosol,
Tissue Specificity	Expressed in brain, lung, kidney, and testis.
Function	function:GTPase-activating protein for RhoA and Cdc42 small GTPases. Together with CDC42 seems to be involved in the pathway mediating the repulsive signaling of Robo and Slit proteins in neuronal migration. SLIT2, probably through interaction with ROBO1, increases the interaction of SRGAP1 with ROBO1 and inactivates CDC42.,sequence caution:Intron retention.,similarity:Contains 1 FCH domain.,similarity:Contains 1 Rho-GAP domain.,similarity:Contains 1 SH3 domain.,subunit:Interacts with ROBO1, CDC42 and RHOA.,tissue specificity:Expressed in brain, lung, kidney, and testis.,
Background	The protein encoded by this gene is a GTPase activator, working with the GTPase CDC42 to negatively regulate neuronal migration. The encoded protein interacts with the transmembrane receptor ROBO1 to inactivate CDC42. [provided by

Nanjing BYabscience technology Co.,Ltd



RefSeq, Sep 2016],

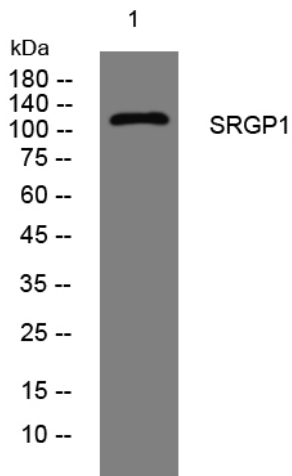
matters needing attention

Avoid repeated freezing and thawing!

Usage suggestions

This product can be used in immunological reaction related experiments. For more information, please consult technical personnel.

Products Images



Western blot analysis of lysates from U2OS cells, primary antibody was diluted at 1:1000, 4° over night