



MTCH1 rabbit pAb

Catalog No	BYab-11749
Isotype	IgG
Reactivity	Human; Mouse
Applications	WB;ELISA;IHC
Gene Name	MTCH1 PSAP CGI-64 UNQ1871/PRO4314
Protein Name	MTCH1
Immunogen	Synthesized peptide derived from human MTCH1 AA range: 235-285
Specificity	This antibody detects endogenous levels of MTCH1 at Human/Mouse
Formulation	Liquid in PBS containing 50% glycerol, 0.5% BSA and 0.02% sodium azide.
Source	Polyclonal, Rabbit,IgG
Purification	The antibody was affinity-purified from rabbit serum by affinity-chromatography using specific immunogen.
Dilution	WB 1:500-2000;IHC-p 1:50-300; ELISA 2000-20000
Concentration	1 mg/ml
Purity	≥90%
Storage Stability	-20°C/1 year
Synonyms	
Observed Band	
Cell Pathway	Mitochondrion outer membrane ; Multi-pass membrane protein .
Tissue Specificity	Widely expressed with a predominant expression in brain.
Function	function:Potential mitochondrial transporter. May play a role in apoptosis.,similarity:Belongs to the mitochondrial carrier family.,similarity:Contains 2 Solcar repeats.,subunit:Interacts with PSEN1.,tissue specificity:Widely expressed with a predominant expression in brain.,
Background	This gene encodes a member of the mitochondrial carrier family. The encoded protein is localized to the mitochondrion inner membrane and induces apoptosis independent of the proapoptotic proteins Bax and Bak. Pseudogenes on chromosomes 6 and 11 have been identified for this gene. Alternatively spliced transcript variants encoding multiple isoforms have been observed. [provided by RefSeq, Oct 2012],

Nanjing BYabscience technology Co.,Ltd



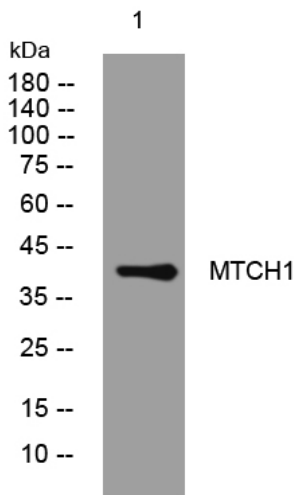
matters needing attention

Avoid repeated freezing and thawing!

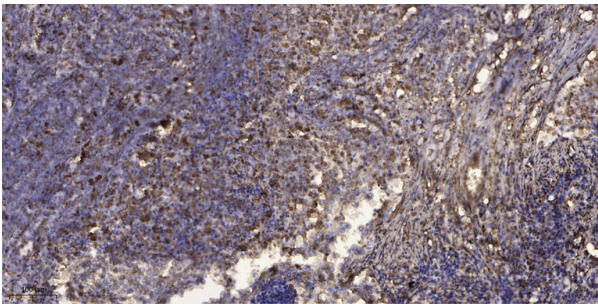
Usage suggestions

This product can be used in immunological reaction related experiments. For more information, please consult technical personnel.

Products Images



Western blot analysis of lysates from A431 cells, primary antibody was diluted at 1:1000, 4° over night



Immunohistochemical analysis of paraffin-embedded human Squamous cell carcinoma of lung. 1, Antibody was diluted at 1:200(4° overnight). 2, Tris-EDTA,pH9.0 was used for antigen retrieval. 3,Secondary antibody was diluted at 1:200(room temperature, 45min).