



CNOT6 rabbit pAb

Catalog No	BYab-11731
Isotype	IgG
Reactivity	Human; Mouse;Rat
Applications	WB
Gene Name	CNOT6 CCR4 KIAA1194
Protein Name	CNOT6
Immunogen	Synthesized peptide derived from human CNOT6 AA range: 293-343
Specificity	This antibody detects endogenous levels of CNOT6 at Human/Mouse/Rat
Formulation	Liquid in PBS containing 50% glycerol, 0.5% BSA and 0.02% sodium azide.
Source	Polyclonal, Rabbit,IgG
Purification	The antibody was affinity-purified from rabbit serum by affinity-chromatography using specific immunogen.
Dilution	WB 1: 500-2000
Concentration	1 mg/ml
Purity	≥90%
Storage Stability	-20°C/1 year
Synonyms	
Observed Band	
Cell Pathway	Cytoplasm . Nucleus . Predominantly cytoplasmic. .
Tissue Specificity	
Function	cofactor:Magnesium.,function:Poly(A) nuclease involved in mRNA decay mediated by the major-protein-coding determinant of instability (mCRD) of the FOS gene in the cytoplasm. Has 3'-5' RNase activity. The CCR4-NOT complex functions as general transcription regulation complex.,similarity:Belongs to the CCR4/nocturin family.,similarity:Contains 3 LRR (leucine-rich) repeats.,subunit:Subunit of the CCR4-NOT core complex that contains CHAF1A, CHAF1B, CNOT1, CNOT2, CNOT3, CNOT4, CNOT6 and CNOT8. Interacts with UNR.,
Background	This gene encodes the catalytic component of the CCR4-NOT core transcriptional regulation complex. The encoded protein has a 3'–5' RNase activity and prefers polyadenylated substrates. The CCR4-NOT complex plays a role in

Nanjing BYabscience technology Co.,Ltd



many cellular processes, including miRNA-mediated repression, mRNA degradation, and transcriptional regulation. [provided by RefSeq, Dec 2014],

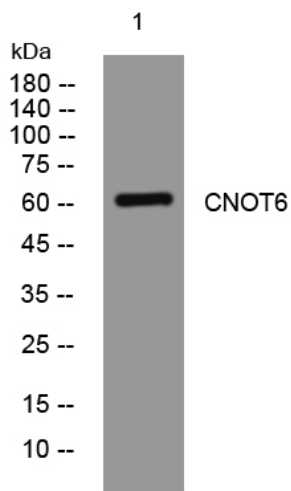
matters needing attention

Avoid repeated freezing and thawing!

Usage suggestions

This product can be used in immunological reaction related experiments. For more information, please consult technical personnel.

Products Images



Western blot analysis of lysates from U2OS cells, primary antibody was diluted at 1:1000, 4° over night