



# METK2 rabbit pAb

<b>Catalog No</b>	BYab-11729
<b>Isotype</b>	IgG
<b>Reactivity</b>	Human; Mouse;Rat
<b>Applications</b>	WB;ELISA;IHC
<b>Gene Name</b>	MAT2A AMS2 MATA2
<b>Protein Name</b>	METK2
<b>Immunogen</b>	Synthesized peptide derived from human METK2 AA range: 294-344
<b>Specificity</b>	This antibody detects endogenous levels of METK2 at Human/Mouse/Rat
<b>Formulation</b>	Liquid in PBS containing 50% glycerol, 0.5% BSA and 0.02% sodium azide.
<b>Source</b>	Polyclonal, Rabbit,IgG
<b>Purification</b>	The antibody was affinity-purified from rabbit serum by affinity-chromatography using specific immunogen.
<b>Dilution</b>	WB 1:500-2000;IHC-p 1:50-300; ELISA 2000-20000
<b>Concentration</b>	1 mg/ml
<b>Purity</b>	≥90%
<b>Storage Stability</b>	-20°C/1 year
<b>Synonyms</b>	
<b>Observed Band</b>	
<b>Cell Pathway</b>	cytosol,methionine adenosyltransferase complex,
<b>Tissue Specificity</b>	Detected in kidney.
<b>Function</b>	catalytic activity:ATP + L-methionine + H(2)O = phosphate + diphosphate + S-adenosyl-L-methionine.,cofactor:Binds 1 potassium ion per subunit.,cofactor:Binds 2 divalent ions per subunit. Magnesium or cobalt.,function:Catalyzes the formation of S-adenosylmethionine from methionine and ATP.,pathway:Amino-acid biosynthesis; S-adenosyl-L-methionine biosynthesis; S-adenosyl-L-methionine from L-methionine: step 1/1.,PTM:The alpha' subunit is a post-translationally modified version of MAT2A.,similarity:Belongs to the AdoMet synthetase family.,subunit:Heterotetramer composed of 2 catalytic alpha subunits (alpha and alpha') (MAT2A) and 1 copy of beta subunit (MAT2B).,

Nanjing BYabscience technology Co.,Ltd



**Background**

The protein encoded by this gene catalyzes the production of S-adenosylmethionine (AdoMet) from methionine and ATP. AdoMet is the key methyl donor in cellular processes. [provided by RefSeq, Jun 2011],

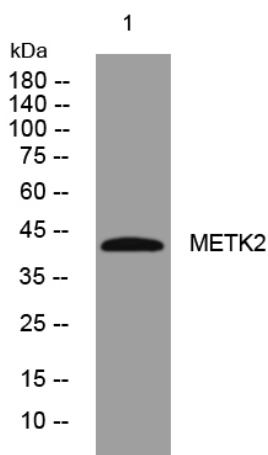
**matters needing attention**

Avoid repeated freezing and thawing!

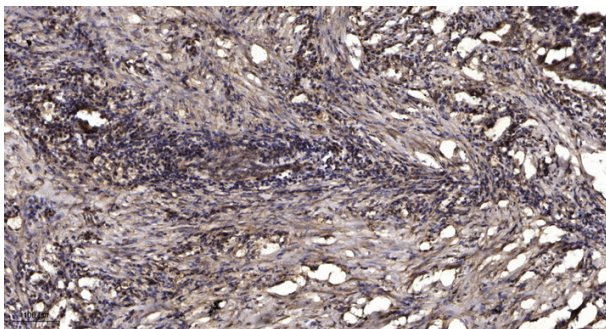
**Usage suggestions**

This product can be used in immunological reaction related experiments. For more information, please consult technical personnel.

**Products Images**



Western blot analysis of lysates from MCF-7 cells, primary antibody was diluted at 1:1000, 4° over night



Immunohistochemical analysis of paraffin-embedded human Squamous cell carcinoma of lung. 1, Antibody was diluted at 1:200(4° overnight). 2, Tris-EDTA,pH9.0 was used for antigen retrieval. 3,Secondary antibody was diluted at 1:200(room temperature, 45min).