



# IFFO1 rabbit pAb

<b>Catalog No</b>	BYab-11712
<b>Isotype</b>	IgG
<b>Reactivity</b>	Human; Mouse
<b>Applications</b>	WB
<b>Gene Name</b>	IFFO1 IFFO
<b>Protein Name</b>	IFFO1
<b>Immunogen</b>	Synthesized peptide derived from human IFFO1 AA range: 387-437
<b>Specificity</b>	This antibody detects endogenous levels of IFFO1 at Human/Mouse
<b>Formulation</b>	Liquid in PBS containing 50% glycerol, 0.5% BSA and 0.02% sodium azide.
<b>Source</b>	Polyclonal, Rabbit,IgG
<b>Purification</b>	The antibody was affinity-purified from rabbit serum by affinity-chromatography using specific immunogen.
<b>Dilution</b>	WB 1: 500-2000
<b>Concentration</b>	1 mg/ml
<b>Purity</b>	≥90%
<b>Storage Stability</b>	-20°C/1 year
<b>Synonyms</b>	
<b>Observed Band</b>	
<b>Cell Pathway</b>	Nucleus . Nucleus, nucleoplasm . Nucleus inner membrane . Nucleus matrix . Mainly soluble, the remaining is localized in the nuclear matrix (PubMed:31548606). Localized at double-strand break (DSB) sites near the lamina and nuclear matrix structures (PubMed:31548606). .
<b>Tissue Specificity</b>	Ubiquitously expressed.
<b>Function</b>	similarity:Belongs to the intermediate filament family.,tissue specificity:Ubiquitously expressed.,
<b>Background</b>	This gene is a member of the intermediate filament family. Intermediate filaments are proteins which are primordial components of the cytoskeleton and nuclear envelope. The proteins encoded by the members of this gene family are evolutionarily and structurally related but have limited sequence homology, with the exception of the central rod domain. Multiple alternatively spliced transcript variants encoding different isoforms have been found for this gene. [provided by RefSeq, Jul 2010],

Nanjing BYabscience technology Co.,Ltd



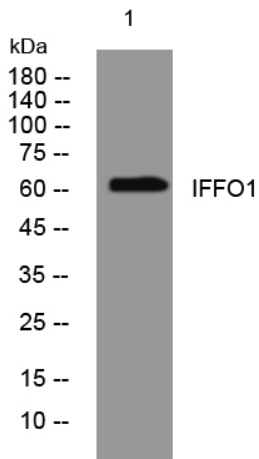
**matters needing attention**

Avoid repeated freezing and thawing!

**Usage suggestions**

This product can be used in immunological reaction related experiments. For more information, please consult technical personnel.

## Products Images



Western blot analysis of lysates from MCF-7 cells, primary antibody was diluted at 1:1000, 4° over night