



# DLGP2 rabbit pAb

<b>Catalog No</b>	BYab-11688
<b>Isotype</b>	IgG
<b>Reactivity</b>	Human; Mouse;Rat
<b>Applications</b>	WB
<b>Gene Name</b>	DLGAP2 DAP2
<b>Protein Name</b>	DLGP2
<b>Immunogen</b>	Synthesized peptide derived from human DLGP2 AA range: 727-777
<b>Specificity</b>	This antibody detects endogenous levels of DLGP2 at Human/Mouse/Rat
<b>Formulation</b>	Liquid in PBS containing 50% glycerol, 0.5% BSA and 0.02% sodium azide.
<b>Source</b>	Polyclonal, Rabbit,IgG
<b>Purification</b>	The antibody was affinity-purified from rabbit serum by affinity-chromatography using specific immunogen.
<b>Dilution</b>	WB 1: 500-2000
<b>Concentration</b>	1 mg/ml
<b>Purity</b>	≥90%
<b>Storage Stability</b>	-20°C/1 year
<b>Synonyms</b>	
<b>Observed Band</b>	
<b>Cell Pathway</b>	Cell membrane ; Peripheral membrane protein . Cell junction, synapse, postsynaptic density . Cell junction, synapse . Postsynaptic density of neuronal cells. .
<b>Tissue Specificity</b>	Expressed in brain and kidney.
<b>Function</b>	function:May play a role in the molecular organization of synapses and neuronal cell signaling. Could be an adapter protein linking ion channel to the subsynaptic cytoskeleton. May induce enrichment of PSD-95/SAP90 at the plasma membrane.,similarity:Belongs to the SAPAP family.,subcellular location:Postsynaptic density of neuronal cells.,subunit:Interacts with DLG1 and DLG4/PSD-95.,tissue specificity:Expressed in brain and kidney.,
<b>Background</b>	The product of this gene is a membrane-associated protein that may play a role in synapse organization and signalling in neuronal cells. This gene is biallelically expressed in the brain, however, only the paternal allele is expressed in the testis (PMID:18055845). Alternatively spliced transcript variants encoding different

Nanjing BYabscience technology Co.,Ltd



isoforms have been identified. [provided by RefSeq, Jun 2014],

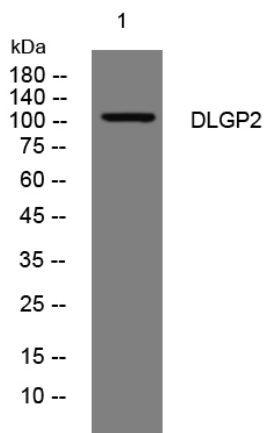
**matters needing attention**

Avoid repeated freezing and thawing!

**Usage suggestions**

This product can be used in immunological reaction related experiments. For more information, please consult technical personnel.

## Products Images



Western blot analysis of lysates from PC-12 cells, primary antibody was diluted at 1:1000, 4° over night