



RFX5 rabbit pAb

Catalog No	BYab-11687
Isotype	IgG
Reactivity	Human; Mouse
Applications	WB;IHC
Gene Name	RFX5
Protein Name	RFX5
Immunogen	Synthesized peptide derived from human RFX5 AA range: 491-541
Specificity	This antibody detects endogenous levels of RFX5 at Human/Mouse
Formulation	Liquid in PBS containing 50% glycerol, 0.5% BSA and 0.02% sodium azide.
Source	Polyclonal, Rabbit,IgG
Purification	The antibody was affinity-purified from rabbit serum by affinity-chromatography using specific immunogen.
Dilution	WB 1:500-2000;IHC-p 1:50-300
Concentration	1 mg/ml
Purity	≥90%
Storage Stability	-20°C/1 year
Synonyms	
Observed Band	
Cell Pathway	Nucleus.
Tissue Specificity	Ubiquitous.
Function	disease:Defects in RFX5 are a cause of bare lymphocyte syndrome type 2 (BLS2) [MIM:209920]; also known as hereditary MHC class II deficiency or HLA class II-deficient combined immunodeficiency. BLS2 is a severe combined immunodeficiency disease with early onset. It is characterized by a profound defect in constitutive and interferon-gamma induced MHC II expression, absence of cellular and humoral T-cell response to antigen challenge, hypogammaglobulinemia and impaired antibody production. The consequence include extreme susceptibility to viral, bacterial and fungal infections..domain:The N-terminus is required for its association with RFXANK and RFXAP, for assembly of the RFX complex, and for binding of this complex to its X box target site in the MHC-II promoter. The C-terminus mediates cooperative binding between the RFX complex and NF-Y.,function:Activates transcription from class II

Nanjing BYabscience technology Co.,Ltd



Background

A lack of MHC-II expression results in a severe immunodeficiency syndrome called MHC-II deficiency, or the bare lymphocyte syndrome (BLS; MIM 209920). At least 4 complementation groups have been identified in B-cell lines established from patients with BLS. The molecular defects in complementation groups B, C, and D all lead to a deficiency in RFX, a nuclear protein complex that binds to the X box of MHC-II promoters. The lack of RFX binding activity in complementation group C results from mutations in the RFX5 gene encoding the 75-kD subunit of RFX (Steimle et al., 1995). RFX5 is the fifth member of the growing family of DNA-binding proteins sharing a novel and highly characteristic DNA-binding domain called the RFX motif. Multiple alternatively spliced transcript variants have been found but the full-length natures of only two have been determined. [provided by RefSeq, Jul 2008],

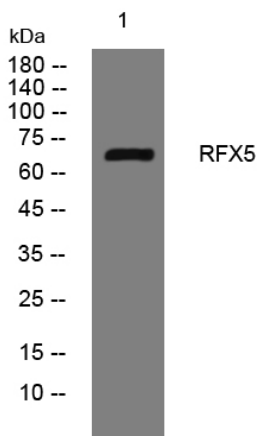
matters needing attention

Avoid repeated freezing and thawing!

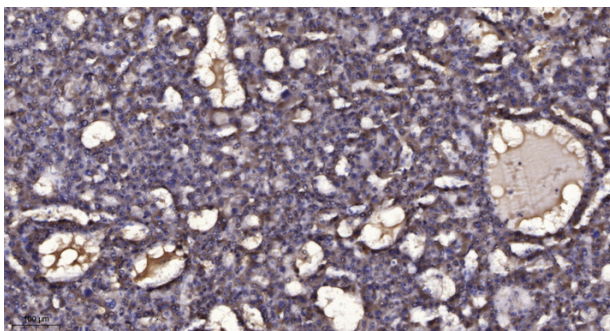
Usage suggestions

This product can be used in immunological reaction related experiments. For more information, please consult technical personnel.

Products Images



Western blot analysis of lysates from A431 cells, primary antibody was diluted at 1:1000, 4° over night



Immunohistochemical analysis of paraffin-embedded human liver cancer. 1, Antibody was diluted at 1:200(4° overnight). 2, Tris-EDTA, pH9.0 was used for antigen retrieval. 3, Secondary antibody was diluted at 1:200(room temperature, 45min).

Nanjing BYabscience technology Co.,Ltd