



# TDH rabbit pAb

<b>Catalog No</b>	BYab-11683
<b>Isotype</b>	IgG
<b>Reactivity</b>	Human; Mouse
<b>Applications</b>	WB
<b>Gene Name</b>	TDH
<b>Protein Name</b>	TDH
<b>Immunogen</b>	Synthesized peptide derived from human TDH AA range: 169-219
<b>Specificity</b>	This antibody detects endogenous levels of TDH at Human/Mouse
<b>Formulation</b>	Liquid in PBS containing 50% glycerol, 0.5% BSA and 0.02% sodium azide.
<b>Source</b>	Polyclonal, Rabbit,IgG
<b>Purification</b>	The antibody was affinity-purified from rabbit serum by affinity-chromatography using specific immunogen.
<b>Dilution</b>	WB 1: 500-2000
<b>Concentration</b>	1 mg/ml
<b>Purity</b>	≥90%
<b>Storage Stability</b>	-20°C/1 year
<b>Synonyms</b>	
<b>Observed Band</b>	
<b>Cell Pathway</b>	Mitochondrion .
<b>Tissue Specificity</b>	Expressed in all tissues examined. Detected in most cell types examined, but not observed in endothelial cells, glioma cell lines and some leukemia cell lines.
<b>Function</b>	caution:According to PubMed:12361482, the human TDH gene is an expressed pseudogene encoding non-functional truncated proteins that are unable to make appropriate contacts with the substrates, L-threonine and NAD(+). Although all exons expected to encode a functional L-threonine 3-dehydrogenase of 369 residues are present in the human genome, all transcripts described encode truncated proteins that result from mutations within the gene causing the loss of acceptor splice site preceding exon 4 and exon 6.,similarity:Belongs to the sugar epimerase family.,tissue specificity:Expressed in all tissues examined. Detected in most cell types examined, but not observed in endothelial cells, glioma cell lines and some leukemia cell lines.,

Nanjing BYabscience technology Co.,Ltd



## Background

This gene appears to be an evolving pseudogene of L-threonine 3-dehydrogenase (TDH). In both prokaryotes and eukaryotes, TDH catalyzes the first of two steps in one of two L-threonine degradation pathways. However, in human, the single gene with sequence similarity to TDH is not capable of encoding a functional TDH protein; the predicted protein lacks most of the C-terminus and parts of the NAD<sup>+</sup> binding motif when compared to other species's TDH proteins. This suggests that the human gene is therefore a pseudogene. Transcripts of this gene are found in all tissues and alternatively spliced transcripts have been described. It is not known if these transcripts are translated, or if the possible protein product provides any functional role. [provided by RefSeq, Jul 2008],

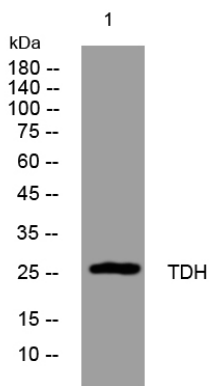
## matters needing attention

Avoid repeated freezing and thawing!

## Usage suggestions

This product can be used in immunological reaction related experiments. For more information, please consult technical personnel.

## Products Images



Western blot analysis of lysates from MDA-MB cells, primary antibody was diluted at 1:1000, 4° over night