



# UBP25 rabbit pAb

<b>Catalog No</b>	BYab-11672
<b>Isotype</b>	IgG
<b>Reactivity</b>	Human; Mouse
<b>Applications</b>	WB
<b>Gene Name</b>	USP25 USP21
<b>Protein Name</b>	UBP25
<b>Immunogen</b>	Synthesized peptide derived from human UB25 AA range: 883-933
<b>Specificity</b>	This antibody detects endogenous levels of UB25 at Human/Mouse
<b>Formulation</b>	Liquid in PBS containing 50% glycerol, 0.5% BSA and 0.02% sodium azide.
<b>Source</b>	Polyclonal, Rabbit,IgG
<b>Purification</b>	The antibody was affinity-purified from rabbit serum by affinity-chromatography using specific immunogen.
<b>Dilution</b>	WB 1: 500-2000
<b>Concentration</b>	1 mg/ml
<b>Purity</b>	≥90%
<b>Storage Stability</b>	-20°C/1 year
<b>Synonyms</b>	
<b>Observed Band</b>	
<b>Cell Pathway</b>	Cytoplasm .; [Isoform USP25m]: Cytoplasm . Nucleus . Some transient punctuate nuclear location in myotubes during myocyte development. .
<b>Tissue Specificity</b>	Isoform USP25a is found in most adult and fetal tissues; expression is moderately high in testis, pancreas, kidney, skeletal muscle, liver, lung, placenta, brain, heart, but very low in peripheral blood, colon, small intestine, ovary, prostate, thymus and spleen. Isoform USP25b is found in all tissues except heart and skeletal muscle. Isoform USP25m is heart and skeletal muscle specific.
<b>Function</b>	catalytic activity:Ubiquitin C-terminal thioester + H(2)O = ubiquitin + a thiol.,function:Involved in the ubiquitin-dependent proteolytic pathway in conjunction with the 26S proteasome.,similarity:Belongs to the peptidase C19 family.,similarity:Contains 2 UIM (ubiquitin-interacting motif) repeats.,tissue specificity:Found in most adult and fetal tissues; expression is moderately high in testis, pancreas, kidney, skeletal muscle, liver, lung, placenta, brain, heart, but very low in peripheral blood, colon, small intestine, ovary, prostate, thymus and spleen.,

Nanjing BYabscience technology Co.,Ltd



### Background

Ubiquitin (MIM 191339) is a highly conserved 76-amino acid protein involved in regulation of intracellular protein breakdown, cell cycle regulation, and stress response. Ubiquitin is released from degraded proteins by disassembly of the polyubiquitin chains, which is mediated by ubiquitin-specific proteases (USPs), such as USP25 (Valero et al., 1999 [PubMed 10644437]).[supplied by OMIM, Mar 2008],

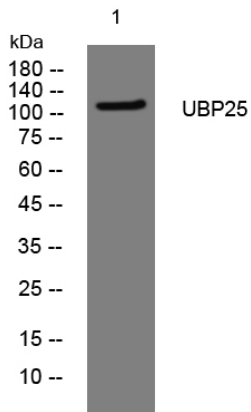
### matters needing attention

Avoid repeated freezing and thawing!

### Usage suggestions

This product can be used in immunological reaction related experiments. For more information, please consult technical personnel.

## Products Images



Western blot analysis of lysates from THP-1 cells, primary antibody was diluted at 1:1000, 4° over night