



EXOS1 rabbit pAb

Catalog No	BYab-11666
Isotype	IgG
Reactivity	Human; Mouse
Applications	WB
Gene Name	EXOSC1 CSL4 CGI-108
Protein Name	EXOS1
Immunogen	Synthesized peptide derived from human EXOS1 AA range: 93-143
Specificity	This antibody detects endogenous levels of EXOS1 at Human/Mouse
Formulation	Liquid in PBS containing 50% glycerol, 0.5% BSA and 0.02% sodium azide.
Source	Polyclonal, Rabbit,IgG
Purification	The antibody was affinity-purified from rabbit serum by affinity-chromatography using specific immunogen.
Dilution	WB 1: 500-2000
Concentration	1 mg/ml
Purity	≥90%
Storage Stability	-20°C/1 year
Synonyms	
Observed Band	
Cell Pathway	Nucleus, nucleolus . Nucleus . Cytoplasm .
Tissue Specificity	
Function	domain:The N- and C-terminal regions of the protein are required for interaction with RRP46.,function:Component of the exosome 3'->5' exoribonuclease complex, a complex that degrades inherently unstable mRNAs containing AU-rich elements (AREs) within their 3' untranslated regions. Required for the 3'processing of the 7S pre-rRNA to the mature 5.8S rRNA. Has a 3'-5' exonuclease activity.,similarity:Contains 1 S1 motif domain.,subunit:Component of the exosome multienzyme ribonuclease complex composed of at least 11 proteins: EXOSC1/CSL4, EXOSC2/RRP4, EXOSC3/RRP40, EXOSC4/RRP41, EXOSC5/RRP46, EXOSC6/MTR3, EXOSC7/RRP42, EXOSC8/RRP43, EXOSC9/Sc1-75, DIS3/RRP44, and EXOSC10/Sc1-100 (only in the nuclear complex). Interacts directly with EXOSC5, EXOSC6, EXOSC7 and EXOSC8. Also associated with the GTPase Ran.,

Nanjing BYabscience technology Co.,Ltd



Background

This gene encodes a core component of the exosome. The mammalian exosome is required for rapid degradation of AU rich element-containing RNAs but not for poly(A) shortening. The association of this protein with the exosome is mediated by protein-protein interactions with ribosomal RNA-processing protein 42 and ribosomal RNA-processing protein 46. Alternative splicing of this gene results in multiple transcript variants. [provided by RefSeq, Jan 2016],

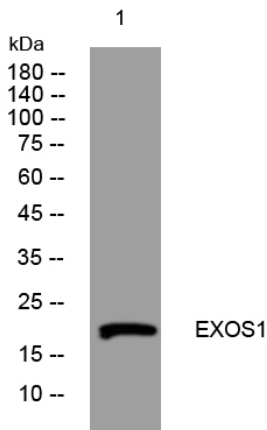
matters needing attention

Avoid repeated freezing and thawing!

Usage suggestions

This product can be used in immunological reaction related experiments. For more information, please consult technical personnel.

Products Images



Western blot analysis of lysates from U2OS cells, primary antibody was diluted at 1:1000, 4° over night