



# SAMD1 rabbit pAb

|                                  |   |
|----------------------------------|---|
| <b>Catalog No</b>                | BYab-11664  |
| <b>Isotype</b>                   | IgG   |
| <b>Reactivity</b>                | Human; Mouse  |
| <b>Applications</b>              | WB  |
| <b>Gene Name</b>                 | SAMD1   |
| <b>Protein Name</b>              | SAMD1   |
| <b>Immunogen</b>                 | Synthesized peptide derived from human SAMD1 AA range: 418-468  |
| <b>Specificity</b>               | This antibody detects endogenous levels of SAMD1 at Human/Mouse   |
| <b>Formulation</b>               | Liquid in PBS containing 50% glycerol, 0.5% BSA and 0.02% sodium azide.   |
| <b>Source</b>                    | Polyclonal, Rabbit,IgG  |
| <b>Purification</b>              | The antibody was affinity-purified from rabbit serum by affinity-chromatography using specific immunogen.   |
| <b>Dilution</b>                  | WB 1: 500-2000  |
| <b>Concentration</b>             | 1 mg/ml   |
| <b>Purity</b>                    | ≥90%  |
| <b>Storage Stability</b>         | -20°C/1 year  |
| <b>Synonyms</b>                  |   |
| <b>Observed Band</b>             |   |
| <b>Cell Pathway</b>              | Nucleus . Chromosome . Secreted . In atherosclerotic lesions, it is found in the extracellular compartment and in foam cells cytoplasm. .   |
| <b>Tissue Specificity</b>        | Expressed in atherosclerotic lesions, not in normal intima. Expressed in foam cells.  |
| <b>Function</b>                  | function:May play a role in atherogenesis by immobilizing LDL in the atherial wall.,similarity:Contains 1 SAM (sterile alpha motif) domain.,tissue specificity:Expressed in atherosclerotic lesions, not in normal intima., |
| <b>Background</b>                |   |
| <b>matters needing attention</b> | Avoid repeated freezing and thawing!  |

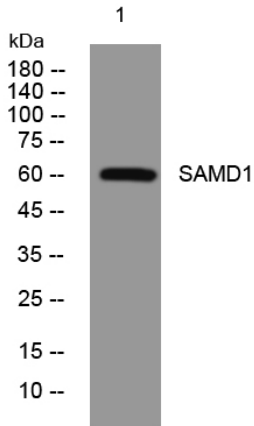
Nanjing BYabscience technology Co.,Ltd



### Usage suggestions

This product can be used in immunological reaction related experiments. For more information, please consult technical personnel.

## Products Images



Western blot analysis of lysates from 293T cells, primary antibody was diluted at 1:1000, 4° over night