



SOX13 rabbit pAb

Catalog No	BYab-11649
Isotype	IgG
Reactivity	Human; Mouse
Applications	WB;ELISA;IHC
Gene Name	SOX13
Protein Name	SOX13
Immunogen	Synthesized peptide derived from human SOX13 AA range: 561-611
Specificity	This antibody detects endogenous levels of SOX13 at Human/Mouse
Formulation	Liquid in PBS containing 50% glycerol, 0.5% BSA and 0.02% sodium azide.
Source	Polyclonal, Rabbit,IgG
Purification	The antibody was affinity-purified from rabbit serum by affinity-chromatography using specific immunogen.
Dilution	WB 1:500-2000;IHC-p 1:50-300; ELISA 2000-20000
Concentration	1 mg/ml
Purity	≥90%
Storage Stability	-20°C/1 year
Synonyms	
Observed Band	
Cell Pathway	Nucleus . Cytoplasm .
Tissue Specificity	Expressed in exocrine cells and islets of Langerhans in the pancreas (at protein level) (PubMed:10871192). Expressed in the pancreas, placenta, kidney, brain, heart, lung, and liver (PubMed:10871192, PubMed:20028982). Expressed in adipose tissue, cervix, colon, esophagus, ovary, prostate, small intestine, spleen, testicle, thymus and thyroid (PubMed:20028982).
Function	function: Binds to the sequence 5'-AACAAAT-3', similarity: Contains 1 HMG box DNA-binding domain., tissue specificity: Highly expressed in kidney, lung, and liver and low expression in thymus, brain, spleen, and muscle.,
Background	This gene encodes a member of the SOX (SRY-related HMG-box) family of transcription factors involved in the regulation of embryonic development and in the determination of cell fate. The encoded protein may act as a transcriptional regulator after forming a protein complex with other proteins. It has also been determined to be a type-1 diabetes autoantigen, also known as islet cell antibody

Nanjing BYabscience technology Co.,Ltd



12. [provided by RefSeq, Jul 2008],

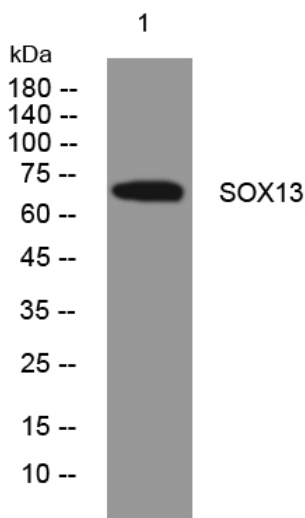
matters needing attention

Avoid repeated freezing and thawing!

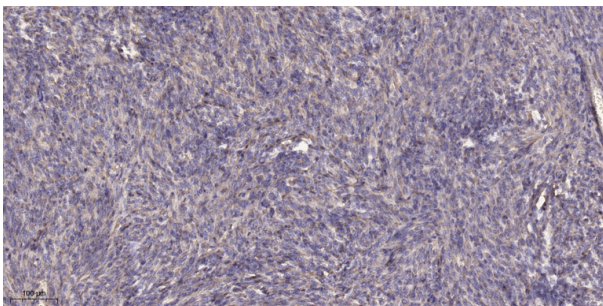
Usage suggestions

This product can be used in immunological reaction related experiments. For more information, please consult technical personnel.

Products Images



Western blot analysis of lysates from HEK293 cells, primary antibody was diluted at 1:1000, 4° over night



Immunohistochemical analysis of paraffin-embedded human Colon cancer. 1, Antibody was diluted at 1:200(4° overnight). 2, Tris-EDTA, pH9.0 was used for antigen retrieval. 3, Secondary antibody was diluted at 1:200(room temperature, 45min).

Nanjing BYabscience technology Co.,Ltd